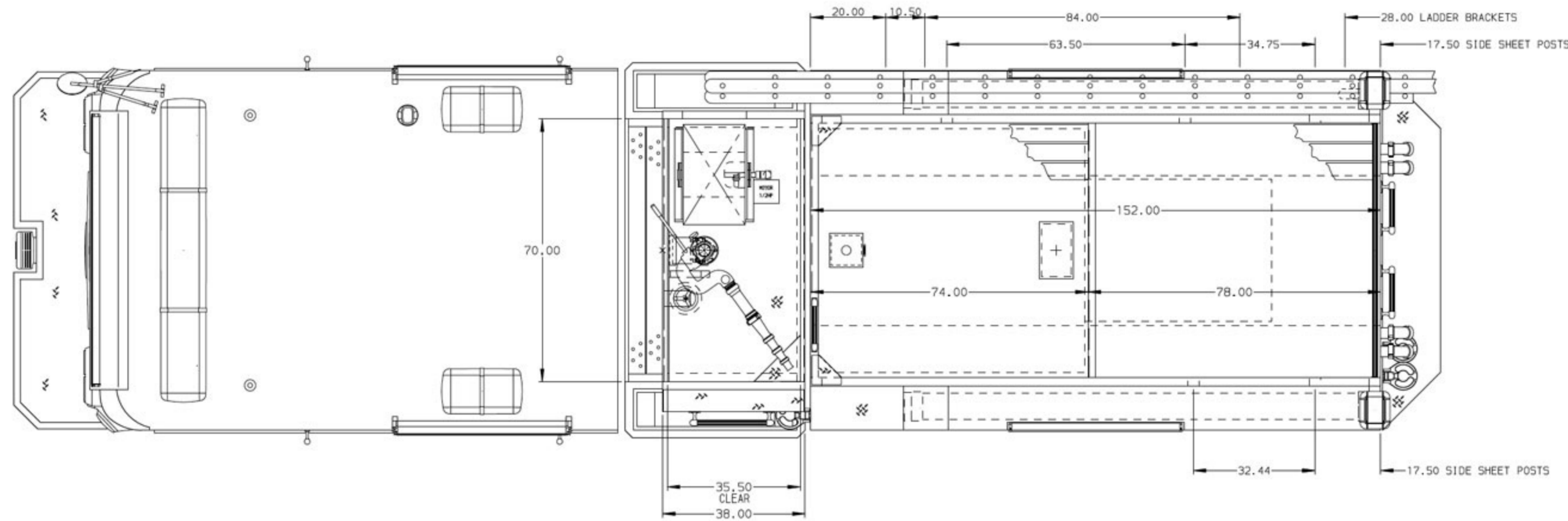
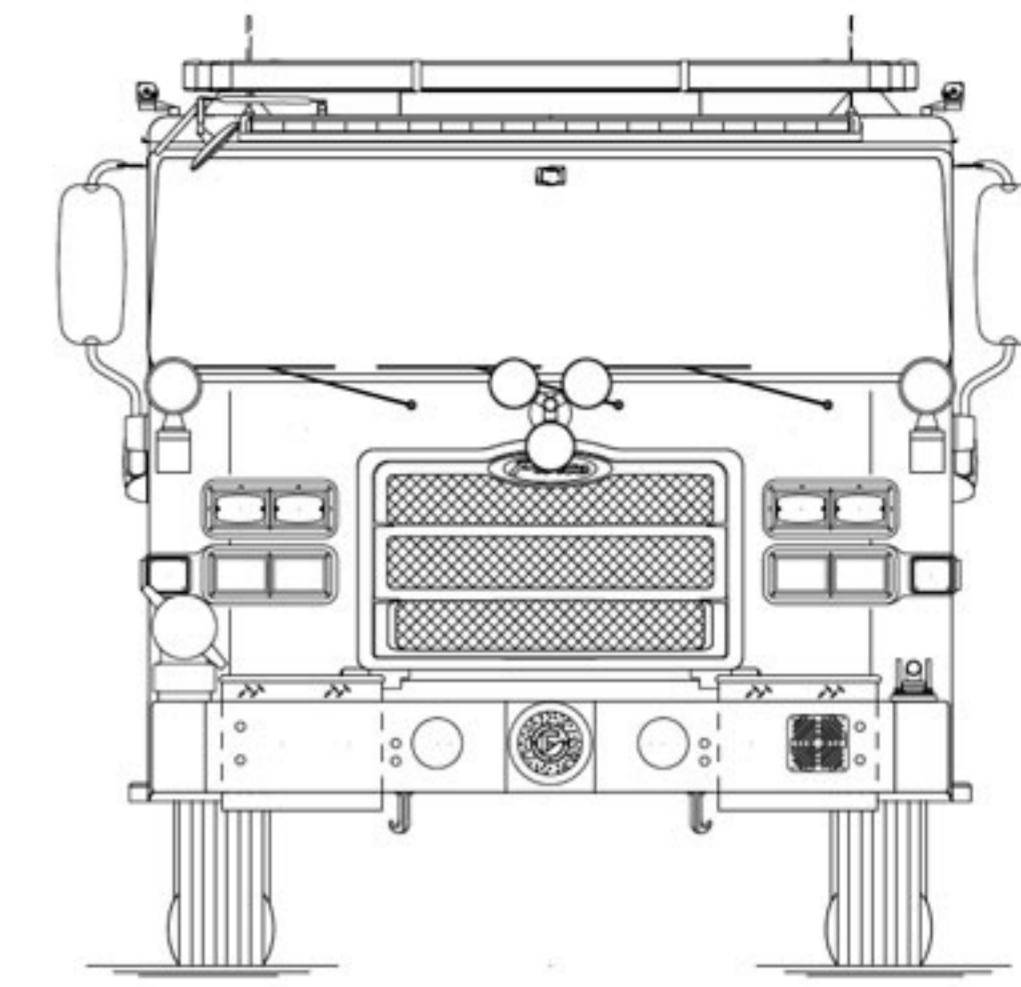
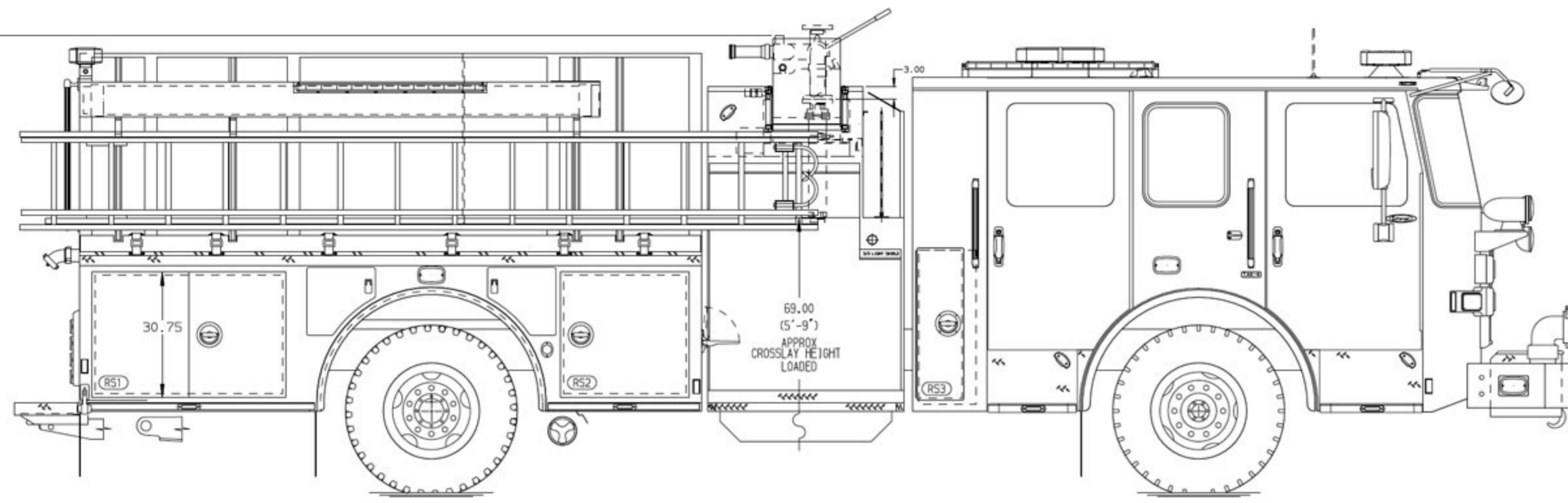
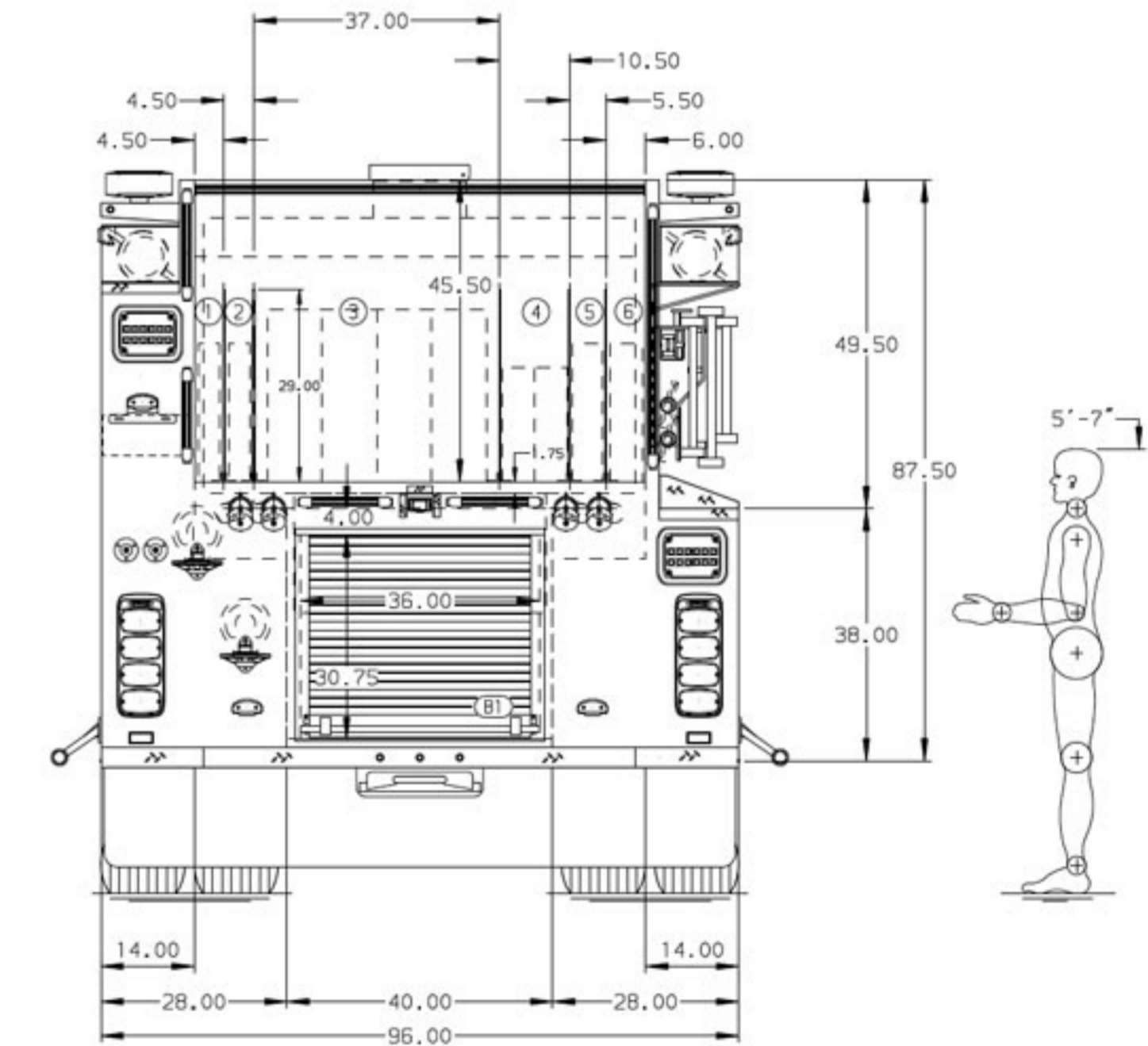
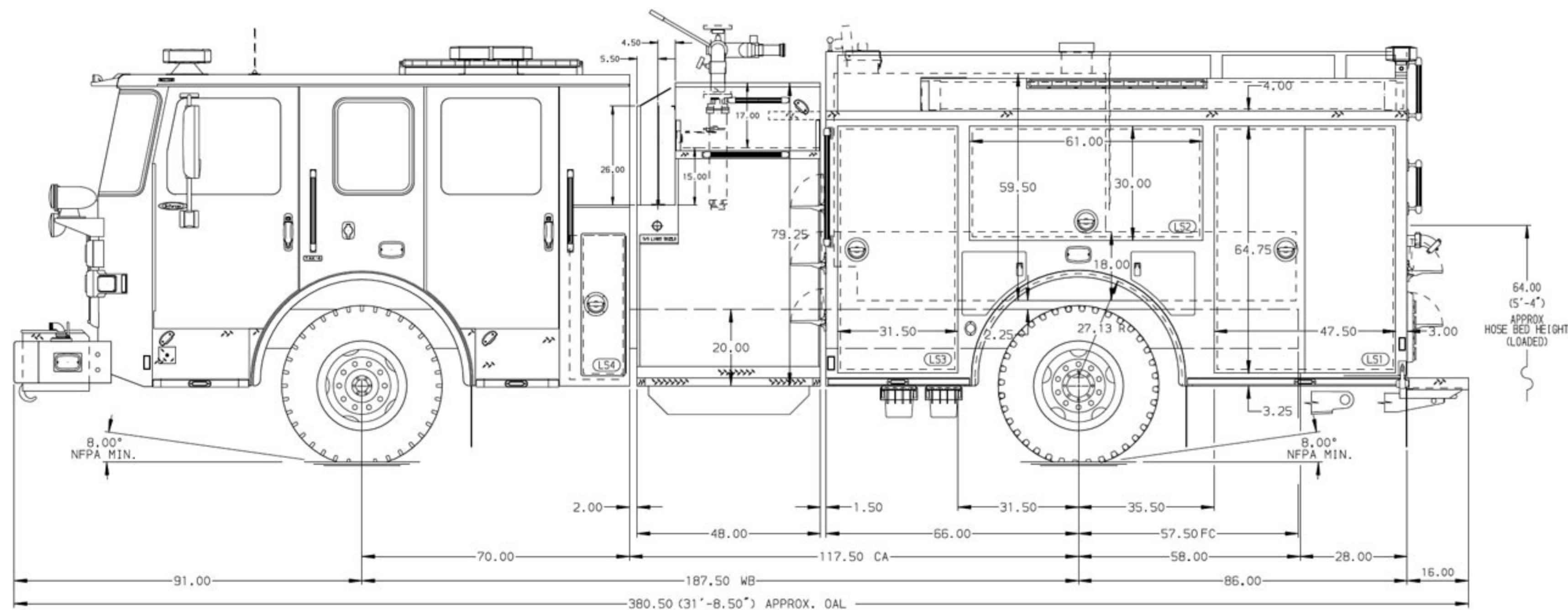


116.00  
(9'-8")  
APPROX  
O.A.H.



- HOSEBED CAPACITIES**
- ① 300' OF 1.75" MERCEDES AQUAFLOW
  - ② 300' OF 1.75" MERCEDES AQUAFLOW
  - ③ 1200' OF 5.00" MERCEDES MEGAFLOW
  - ④ 500' OF 3.00" MERCEDES AQUAFLOW
  - ⑤ 300' OF 2.50" MERCEDES MEGAFLOW
  - ⑥ 300' OF 3.00" MERCEDES AQUAFLOW



**CUSTOMER APPROVAL**

APPROVED BY: \_\_\_\_\_  
DATE: \_\_\_\_\_



JOB NO.	PRELIM
SCALE	1:24
DATE	
DRAWN BY	BTH
24AUG22	
CHECKED BY	NPA
25AUG22	
SHEET SIZE	
SHEET NO.	1 OF 1

CHASSIS DATA	TITLE	1500-D-1000P, 980G WATER-20G FOAM, 152" L5 FH FDLR, RS LOW, (2) X-LAYS, LADDER BRACKETS, DELUGE, BOOSTER
MAKE	FOR	NORTHERN YORK COUNTY FIRE RESCUE
PIERCE		BID# 781
MODEL	DWG	GLICK FIRE EQUIPMENT CO, INC CYLE SHEAFFER
ENFORCER	NO.	05-0785

ALUMINUM BODY    MAXIMUM O.A.H. 116.00"    MAXIMUM O.A.L. 381.00"    SIDE ROLL AND FRONTAL IMPACT PROTECTION

**NOTE**  
DIMENSIONS SHOWN ARE APPROXIMATE AND ARE SUBJECT TO MINOR DEVIATIONS AS MAY OCCUR OR BE NECESSARY IN CONSTRUCTION. MINOR DETAILS NOT SHOWN.