

- HOSEBED CAPACITIES
- ① 300' OF 1.75" D.J. POLY HOSE
 - ② 300' OF 2.50" D.J. POLY HOSE
 - ③ 1500' OF 4.00" D.J. POLY HOSE
 - ④ 300' OF 2.50" D.J. POLY HOSE
 - ⑤ 400' OF 3.00" D.J. POLY HOSE

SURFACE DESIGNATION AND PATHWAY MARKINGS

(4) HOSE BED DIVIDERS W/ HINGED CUTOUTS AND (2) OUTBOARD DIVIDERS WITH NOTCH

(2) CODE3 LXEX2F L.E.D. WARNING LIGHTS EACH SIDE

(2) CODE3 LXEX2F L.E.D. WARNING LIGHTS EACH SIDE

(4) 2.50" OUTLETS

PIERCE REAR VIEW CAMERA RECESSED

CUPSWITCH FOR REAR POLE SCENE LIGHTS

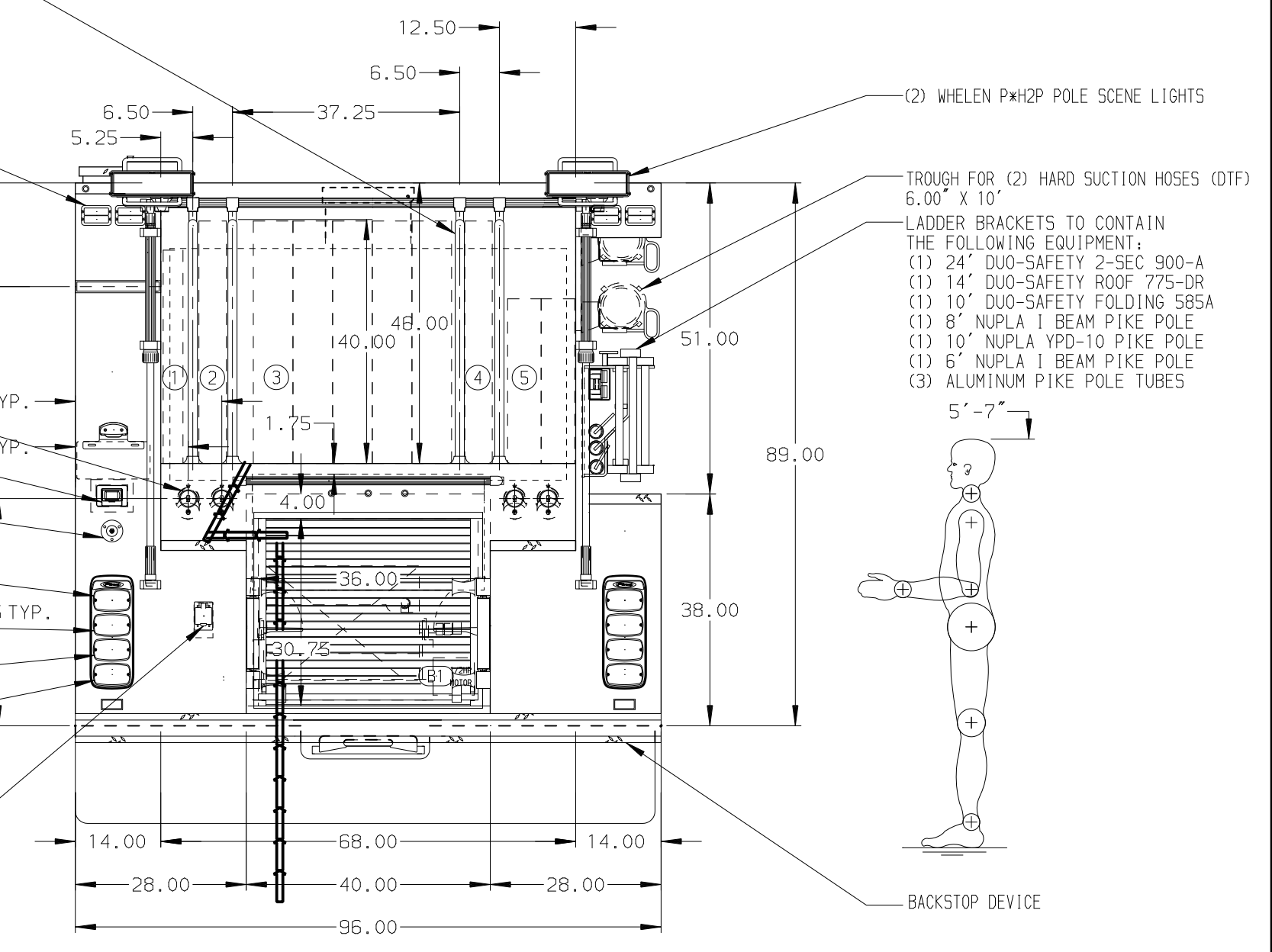
(2) WHELEN M5 L.E.D. STOP/TAIL LIGHTS

(2) WHELEN M5 L.E.D. DIRECTIONAL LIGHTS

(2) WHELEN M6 L.E.D. BACK-UP LIGHTS

LIGHTS MOUNTED IN WHELEN M6 "PIERCE" BEZELS

SHORELINE RECEPTACLE WITH KUSSMAUL AUTO-EJECT



ALUMINUM BODY

NOTE
DIMENSIONS SHOWN ARE APPROXIMATE AND ARE SUBJECT TO MINOR DEVIATIONS AS MAY OCCUR OR BE NECESSARY IN CONSTRUCTION. MINOR DETAILS NOT SHOWN.

1. ONSPOUT AUTOMATIC TIRE CHAINS TO BE PROVIDED AT REAR
2. AIR INLET/OUTLET WITH DISCONNECT FITTING ON DRIVER'S SIDE PUMP PANEL
3. BATTERY CHARGER LOCATED ON TOP OF THE PASSENGER'S SIDE EMS COMPARTMENT
4. DUAL L.E.D. LIGHT STRIPS LOCATED IN HOSE BED
5. SIX DRIP PAN GUARDS FOR ROLL-UP DOOR LOCATED PER SHOP ORDER
6. FOUR FULL WIDTH/DEPTH ADJUSTABLE SHELVES LOCATED PER SHOP ORDER
7. THREE ADJUSTABLE SLIDE-OUT TRAYS LOCATED PER SHOP ORDER
8. ONE FLOOR MOUNTED SLIDE-OUT TRAY LOCATED PER SHOP ORDER
9. ONE SWING-OUT ALUMINUM TOOL BOARD LOCATED PER SHOP ORDER
10. PARTITION BETWEEN COMPARTMENTS L51/B1 AND R51/B1

11. TWO VERTICAL PARTITIONS LOCATED PER SHOP ORDER
12. 0.75" GARDEN HOSE OUTLET ON THE DRIVER'S SIDE PUMP PANEL
13. HANNAY MODEL SBFE32-21-22-8 BOOSTER REEL WITH 200' OF 1.00" HOSE IN B1
14. MIC AND SPEAKER ON THE DRIVER'S SIDE PUMP PANEL HIGH AND FORWARD
15. CIRCUIT BREAKER PANEL LOCATED PER SHOP ORDER
16. FOUR NEMA DUPLEX RECEPTACLES LOCATED PER SHOP ORDER
17. TWO 120V DUPLEX RECEPTACLES LOCATED PER SHOP ORDER
18. BATTERY CHARGER INDICATOR LOCATED BEHIND THE DRIVER'S SEAT ON A BRACKET
19. ONE ALUMINUM STORAGE BIN LOCATED PER SHOP ORDER
20. ONE EQUIPMENT STORAGE RACK LOCATED PER SHOP ORDER

REV	DATE	BY	CH	CHASSIS DATA
▽	11JAN23	LST	-	MAKE
▽	03NOV22	LST	NPE	PIERCE
▽	17JUN22	LST	NBE	MODEL

		JOB NO.	37525
		SCALE	DATE
TITLE 2000-D-770P, 750 GAL OF WATER W/ 20 GAL FOAM CELL 152" BODY, LADDER BRACKETS, DELUGE	DRAWN BY LST	DATE	06JUN22
		FOR	YARDLEY-MAKEFIELD FIRE COMPANY YARDLEY, PENNSYLVANIA
DWG NO. 37525AD	CHECKED BY MGE	DATE	07JUN22
		SHEET SIZE	SHEET NO.
		D	1 OF 1