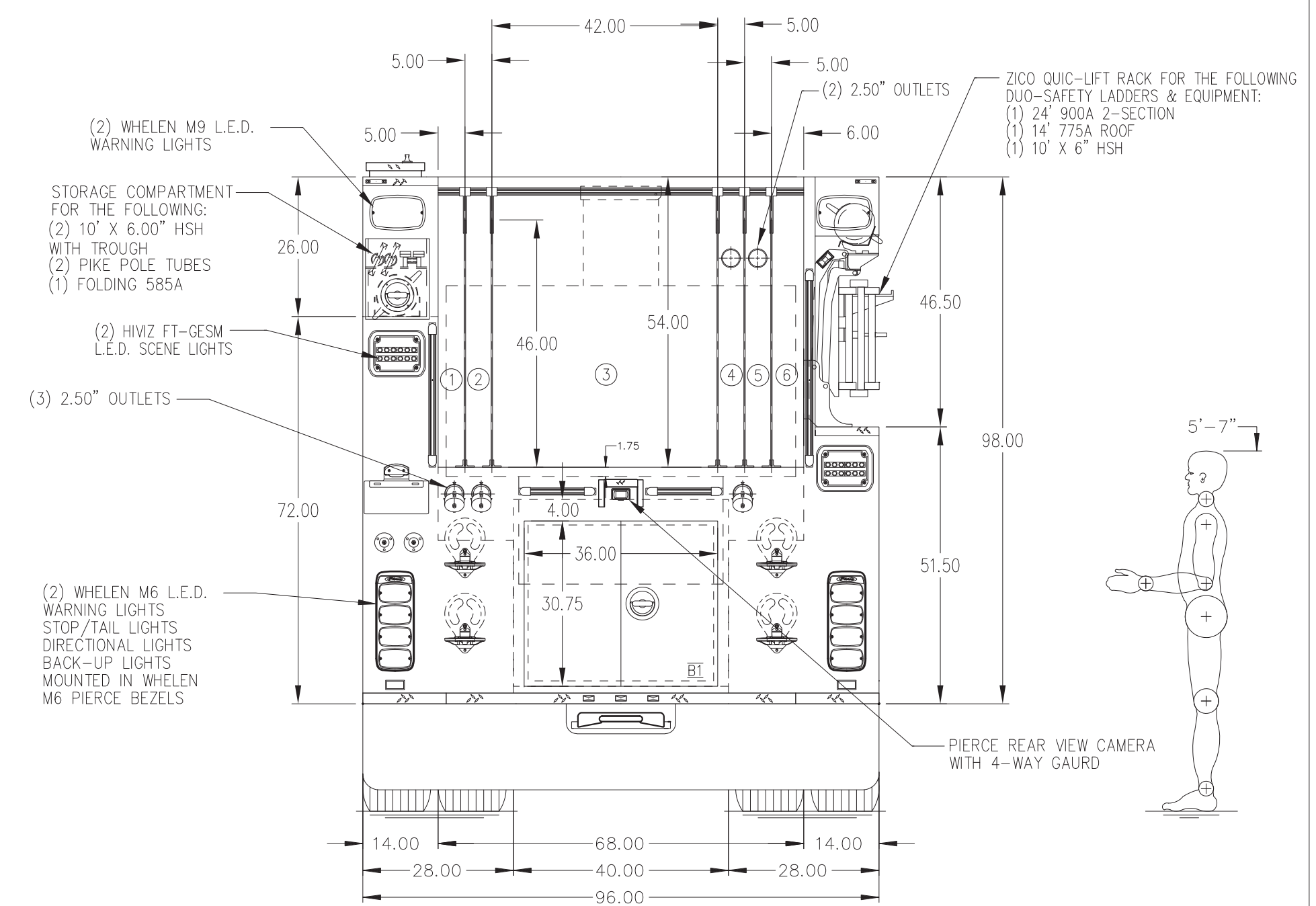


- HOSEBED CAPACITIES
- ① 200' OF 2.50" WITH 150' OF 1.75" DOJ ON TOP (HOSES WILL BE CONNECTED AS ONE LINE)
 - ② 200' OF 1.75" DOJ
 - ③ 1200' OF 5.00" LDH
 - ④ 200' OF 1.75" DOJ
 - ⑤ 200' OF 2.50" WITH 150' OF 1.75" DOJ ON TOP (HOSES WILL BE CONNECTED AS ONE LINE)
 - ⑥ 300' OF 3.00" DOJ



ALUMINUM BODY

SIDE ROLL AND FRONTAL IMPACT PROTECTION

NOTE
DIMENSIONS SHOWN ARE APPROXIMATE AND ARE SUBJECT TO MINOR DEVIATIONS AS MAY OCCUR OR BE NECESSARY IN CONSTRUCTION. MINOR DETAILS NOT SHOWN.

REV	DATE	BY	CH	ENFORCER

	PROPOSAL	819
	SCALE	DATE
TITLE	DRAWN BY	250CT2022
FOR	CHECKED BY	N/A
DWG NO.	SHEET NO.	1 OF 1

MANUFACTURING INC.
 2000-D-750 GAL POLY, 161" PUMPER BODY
 ZICO LADDER RACK, BOOSTER REEL
 LANCASTER TOWNSHIP FIRE DEPARTMENT
 LANCASTER, PA
 PRELIMINARY PRINT ONLY