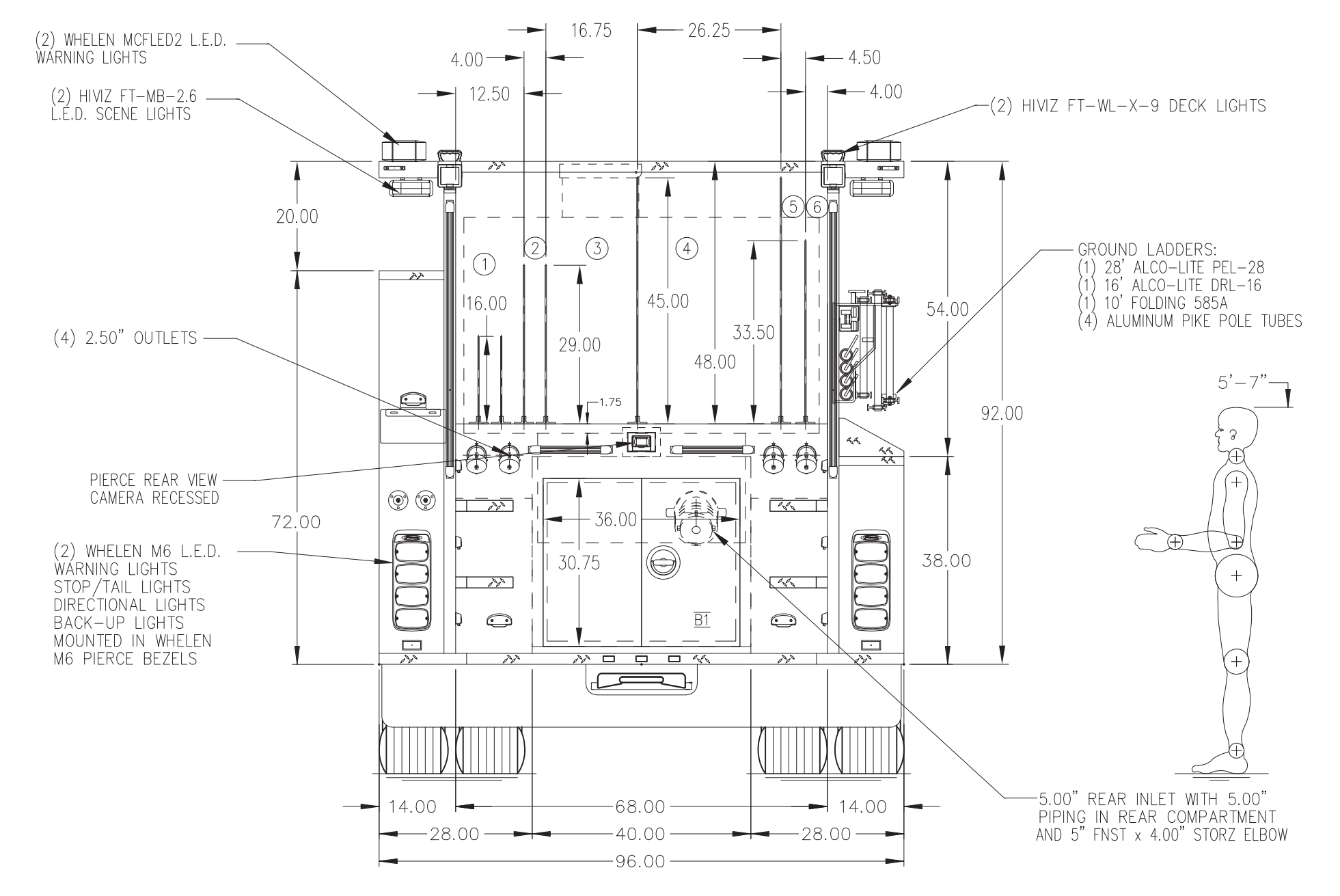
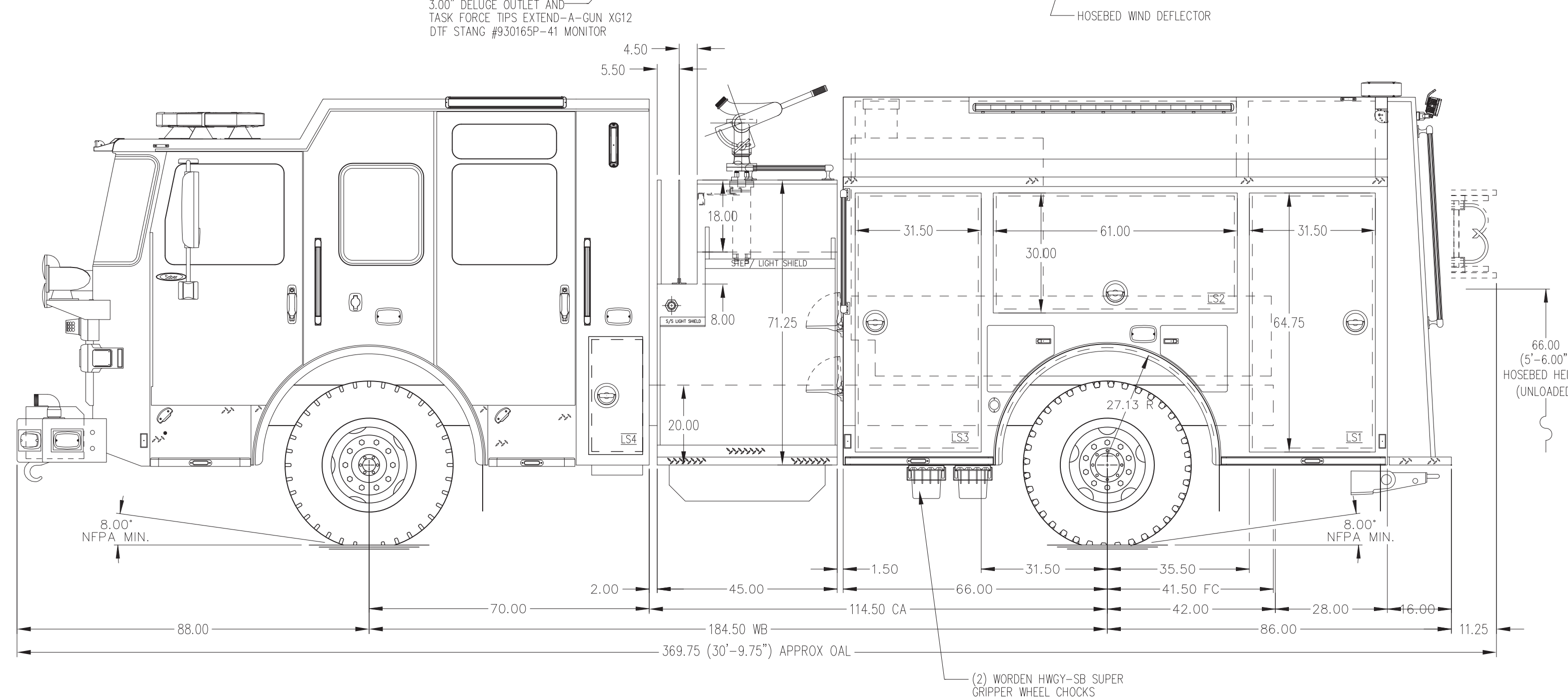


- HOSEBED CAPACITIES
- ① 400' OF 1.75" DJH SINGLE STACKED
  - ② 200' OF 1.75" DJH SINGLE STACKED
  - ③ 600' OF 3.00" DJH TRIPLE STACKED
  - ④ 1500' OF 4.00" DJH
  - ⑤ 250' OF 2.00" DJH SINGLE STACKED
  - ⑥ 300' OF 1.75" DJH SINGLE STACKED



ALUMINUM BODY

SIDE ROLL AND FRONTAL IMPACT PROTECTION

NOTE  
DIMENSIONS SHOWN ARE APPROXIMATE AND ARE SUBJECT TO MINOR DEVIATIONS AS MAY OCCUR OR BE NECESSARY IN CONSTRUCTION. MINOR DETAILS NOT SHOWN.

- 1. SHORELINE RECEPTACLE WITH KUSSMAUL SUPER AUTO-EJECT LOCATED ON DRIVER SIDE OF THE CAB
- 2. BATTERY CHARGER LOCATED PER ORDER

REV	DATE	BY	CH	SABER FR
-----	------	----	----	----------

		PROPOSAL	814
		SCALE	DATE
TITLE	2000-D-750P, 136" FH DS/LOW PS BODY	DRAWN BY	KRG
FOR	(2) CROSSLAYS, DELUGE, BOOSTER REEL	CHECKED BY	N/A
DWG NO.	CARNEGIE VOLUNTEER FIRE DEPARTMENT	SHEET SIZE	N/A
	CARNEGIE, PA		
	PRELIMINARY PRINT ONLY	SHEET NO.	1 OF 1