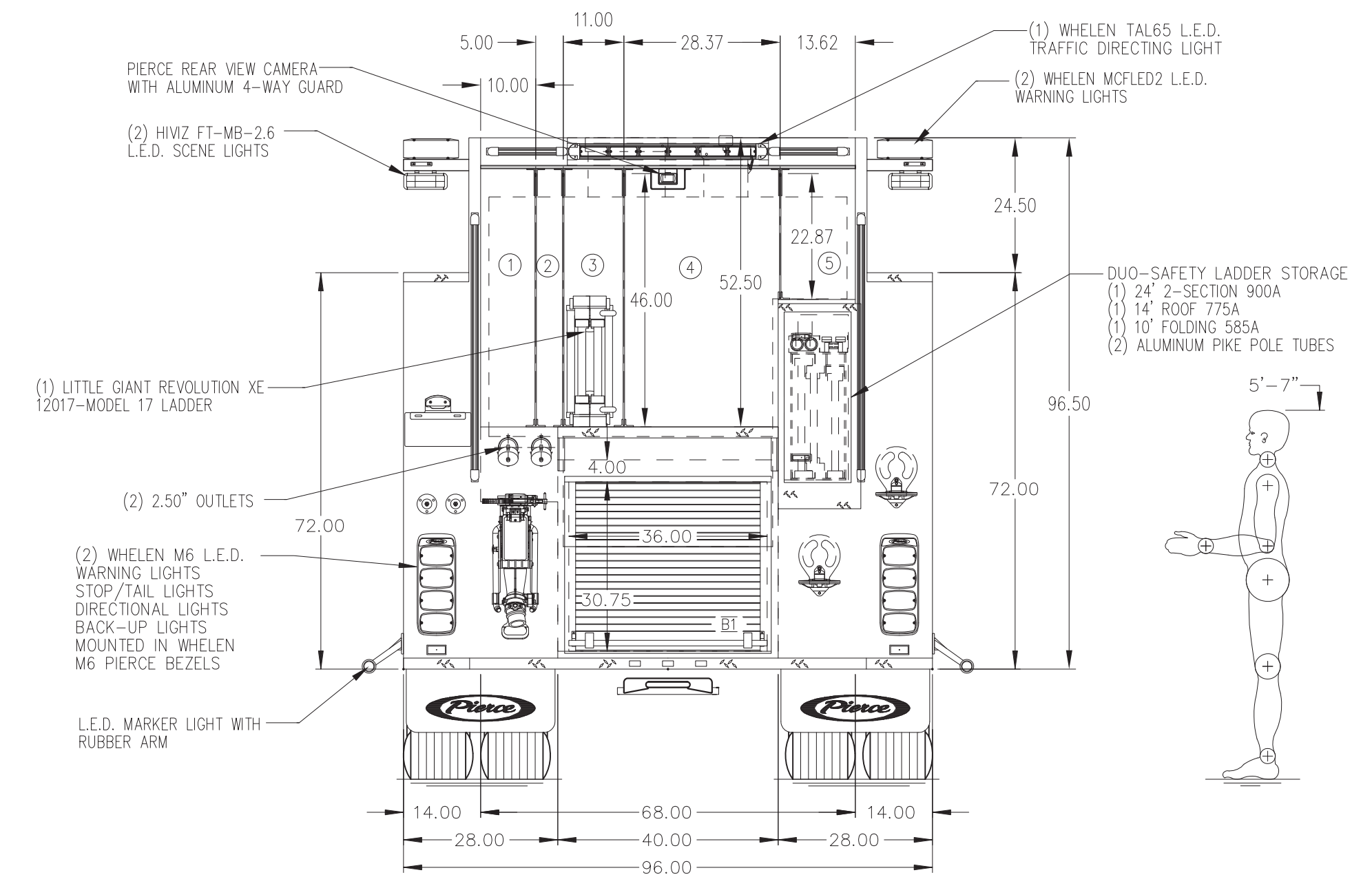


- HOSEBED CAPACITIES**
- ① 600' OF 2.50" D.J. HOSE DOUBLE STACK (DEAD LAY)
 - ② 200' OF 2.50" D.J. HOSE SINGLE STACK AND 200' OF 2.00" D.J. HOSE SINGLE STACK ON TOP OF THE 2.50"
 - ③ ROOM FOR A VERTICAL LITTLE GIANT LADDER
 - ④ 1200' OF 5.00" S.J. HOSE
 - ⑤ HIGH RISE PACK



ALUMINUM BODY

NOTE
DIMENSIONS SHOWN ARE APPROXIMATE AND ARE SUBJECT TO MINOR DEVIATIONS AS MAY OCCUR OR BE NECESSARY IN CONSTRUCTION. MINOR DETAILS NOT SHOWN.

REV	DATE	BY	CH	SABER FR
19APR23	KRG	-		CHASSIS DATA
06APR23	KRG	-		MAKE
06MAR23	KRG	-		PIERCE
23FEB23	KRG	-		MODEL

		PROPOSAL	784
		SCALE	DATE
TITLE	2000-D-750P, 725G WATER / 25G FOAM. 136" BODY (1) XLAY, LADDERS BTWN TANK & S/SHT, HUSKY 3	DRAWN BY	KRG
FOR	PRESTO VOLUNTEER FIRE DEPARTMENT PRESTO, PA	CHECKED BY	N/A
DWG NO.	PRELIMINARY PRINT ONLY	SHEET SIZE	D
		SHEET NO.	1 OF 1