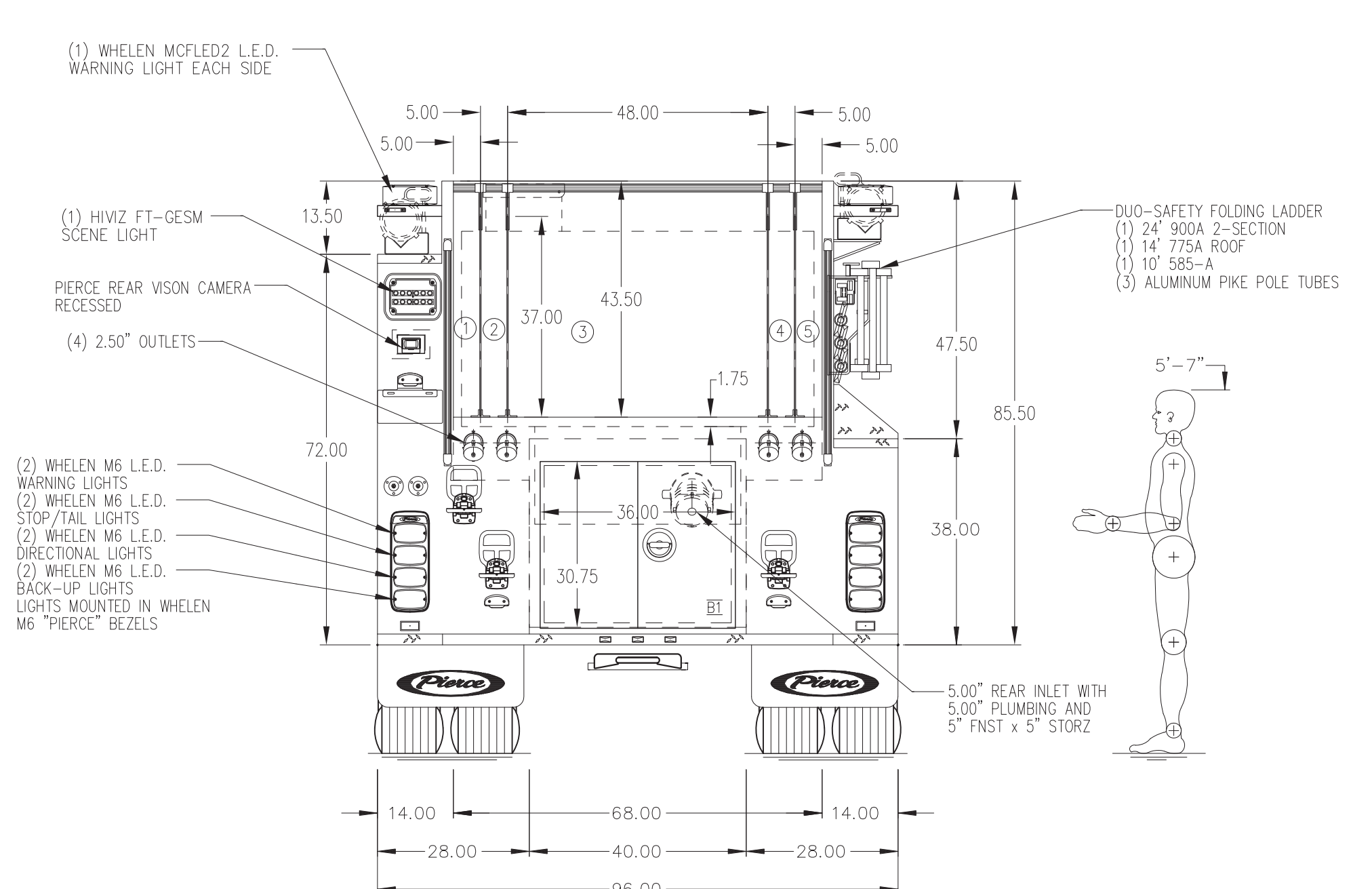
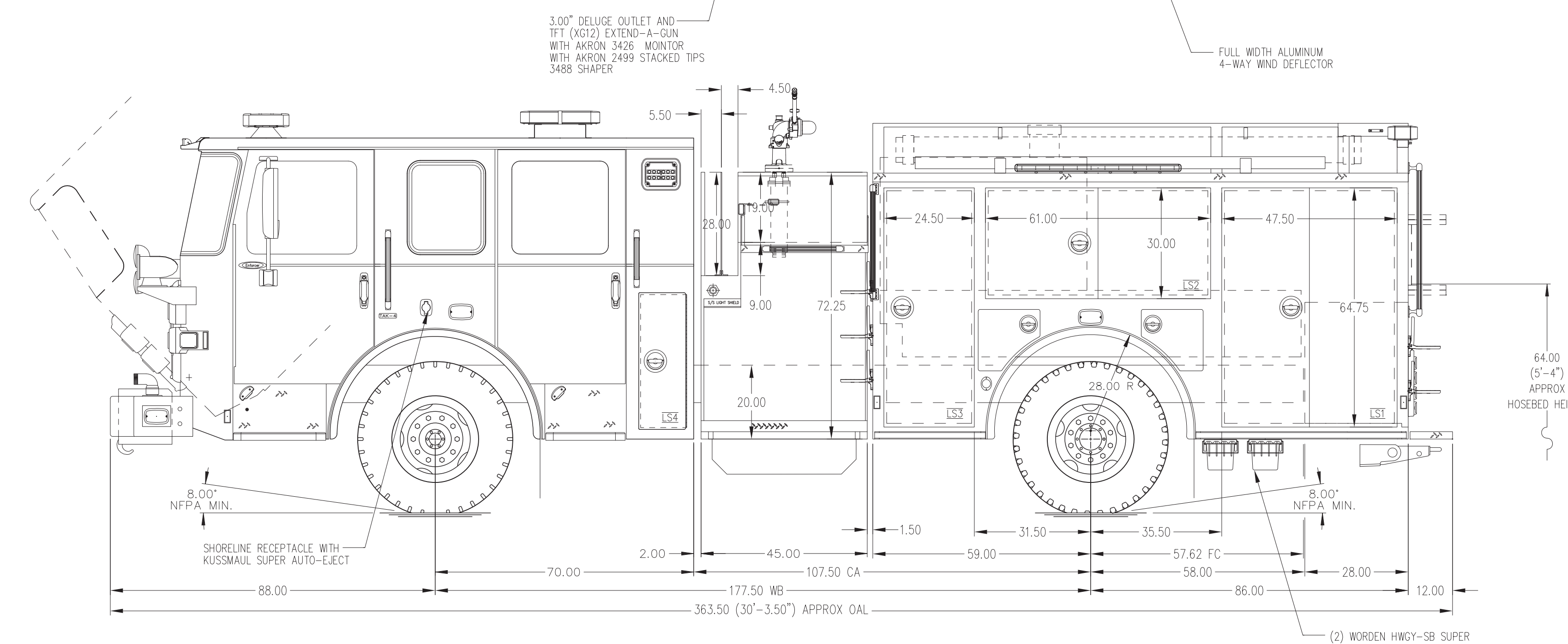


- HOSEBED CAPACITIES
- ① 250' OF 2.50" PRE-CONNECT
  - ② 300' OF 1.75" PRE-CONNECT
  - ③ 1500' OF 5.00" DEADLAY
  - ④ 200' OF 1.75" PRE-CONNECT
  - ⑤ 250' OF 2.50" PRE-CONNECT



ALUMINUM BODY

SIDE ROLL AND FRONTAL IMPACT PROTECTION

NOTE  
DIMENSIONS SHOWN ARE APPROXIMATE AND ARE SUBJECT TO MINOR DEVIATIONS AS MAY OCCUR OR BE NECESSARY IN CONSTRUCTION. MINOR DETAILS NOT SHOWN.

REV	DATE	BY	CH	ENFORCER

	TITLE	1500-D-750 GAL POLY, 145" PUMPER BODY (2) XLAYS, LADDERS ON PS	PROPOSAL	776
	MAKE	PIERCE	SCALE	1:24 DATE
	MODEL		DRAWN BY	KRG 09FEB2023
	DWG NO.	PRELIMINARY PRINT ONLY	CHECKED BY	N/A N/A
			SHEET SIZE	D SHEET NO. 1 OF 1