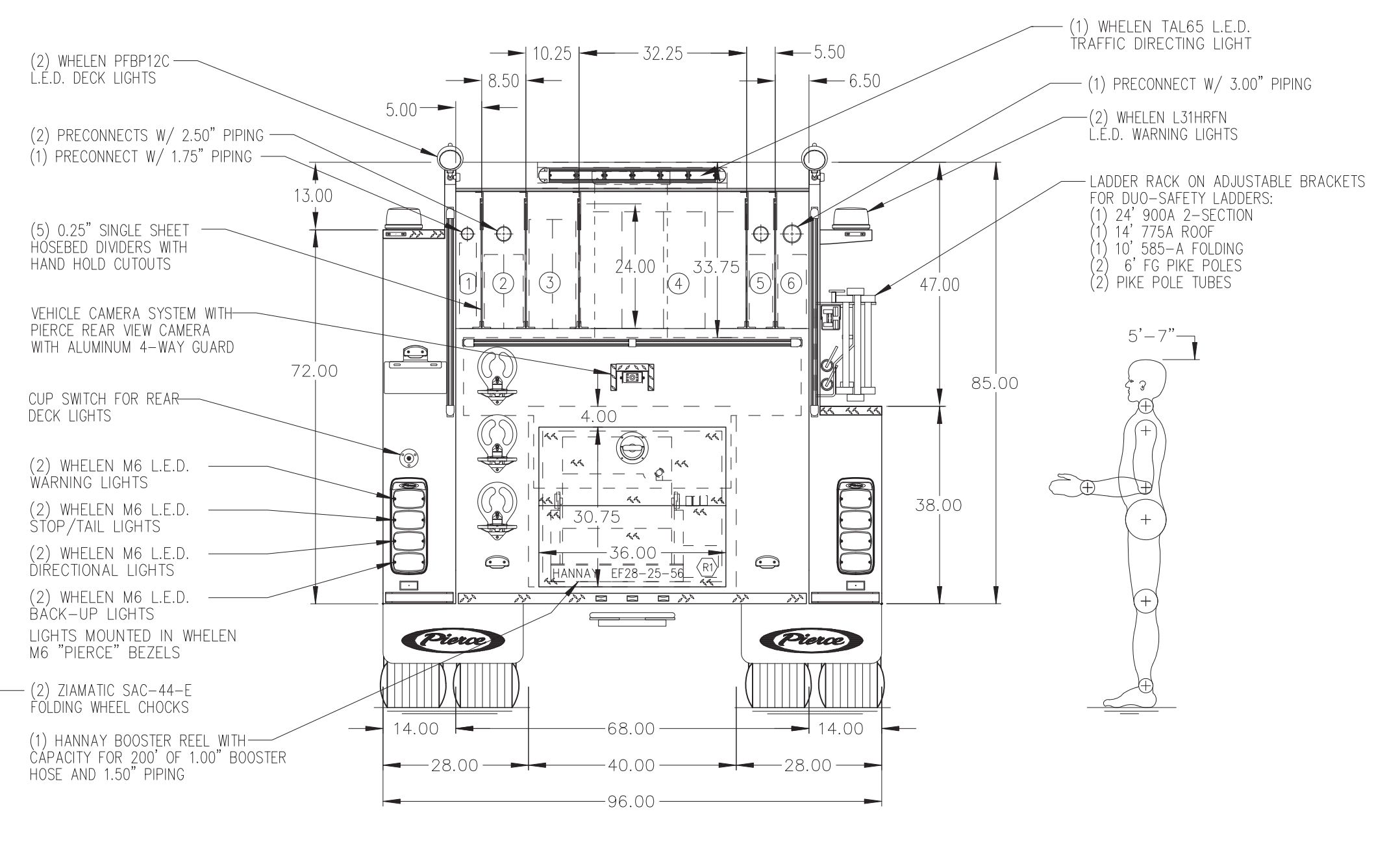


**HOSEBED CAPACITIES**

①	- 200' OF 1.75" D.J. HOSE
②	- 300' OF 2.00" D.J. HOSE
③	- 450' OF 2.50" D.J. HOSE
④	- 1000' OF 5.00" D.J. HOSE
⑤	- 150' OF 2.50" D.J. HOSE
⑥	- 150' OF 3.00" D.J. HOSE



**ALUMINUM BODY**

**NOTE**  
DIMENSIONS SHOWN ARE APPROXIMATE AND ARE SUBJECT TO MINOR DEVIATIONS AS MAY OCCUR OR BE NECESSARY IN CONSTRUCTION. MINOR DETAILS NOT SHOWN.

CHASSIS DATA	TITLE	1500-D-500 GAL WATER, 140" FH DS / LOW PS	PROPOSAL	689
MAKE	FOR	(2) CROSSSLAYS, DELUGE, BOOSTER REEL	SCALE	DATE
PIERCE		NANTICOKE CITY FIRE DEPARTMENT (ENGINE #2)	DRAWN BY	KRG
MODEL		NANTICOKE, PENNSYLVANIA	CHECKED BY	N/A
REV	DATE	BY	SABER FR	SHEET NO.
				D
				1 OF 1

