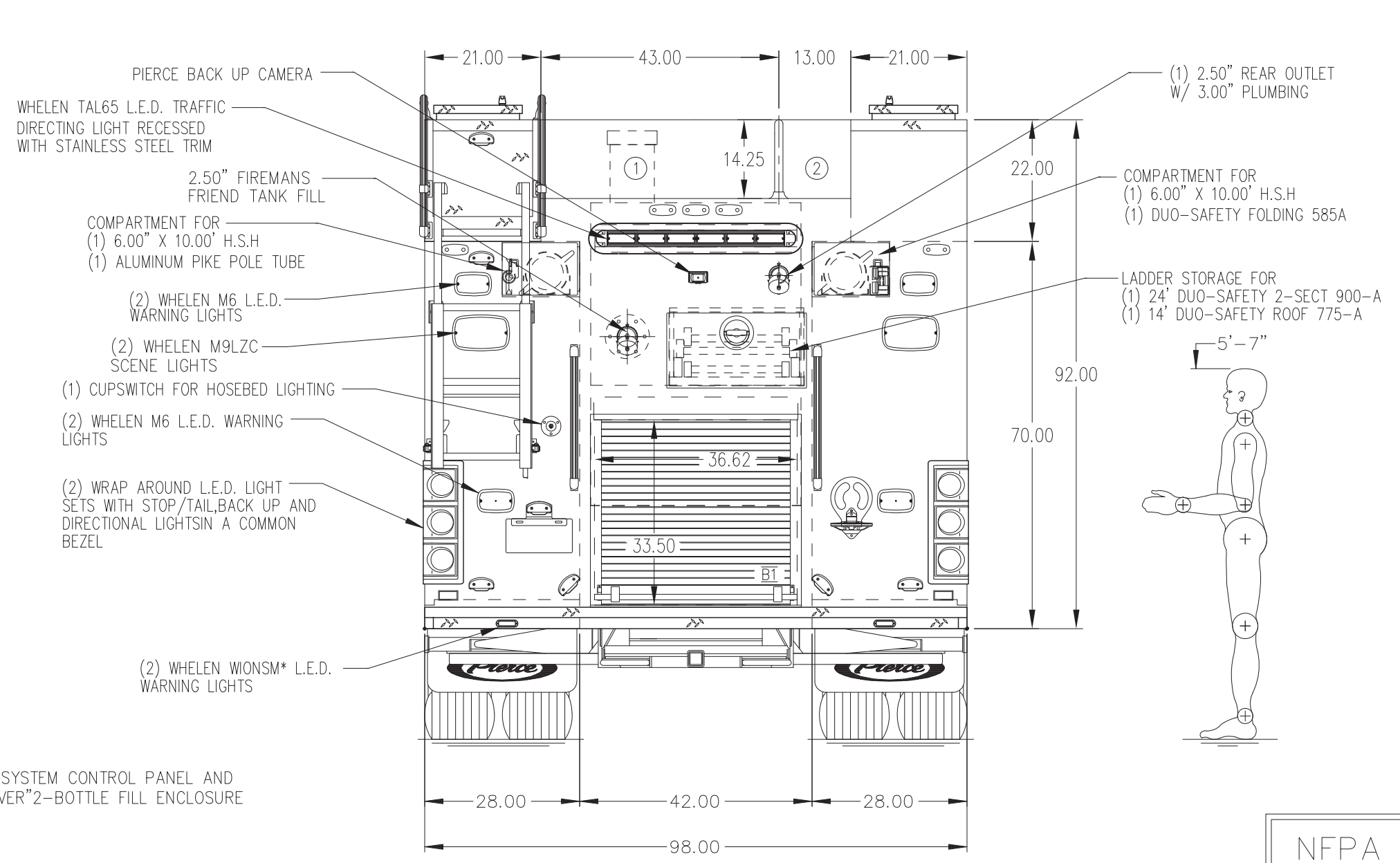
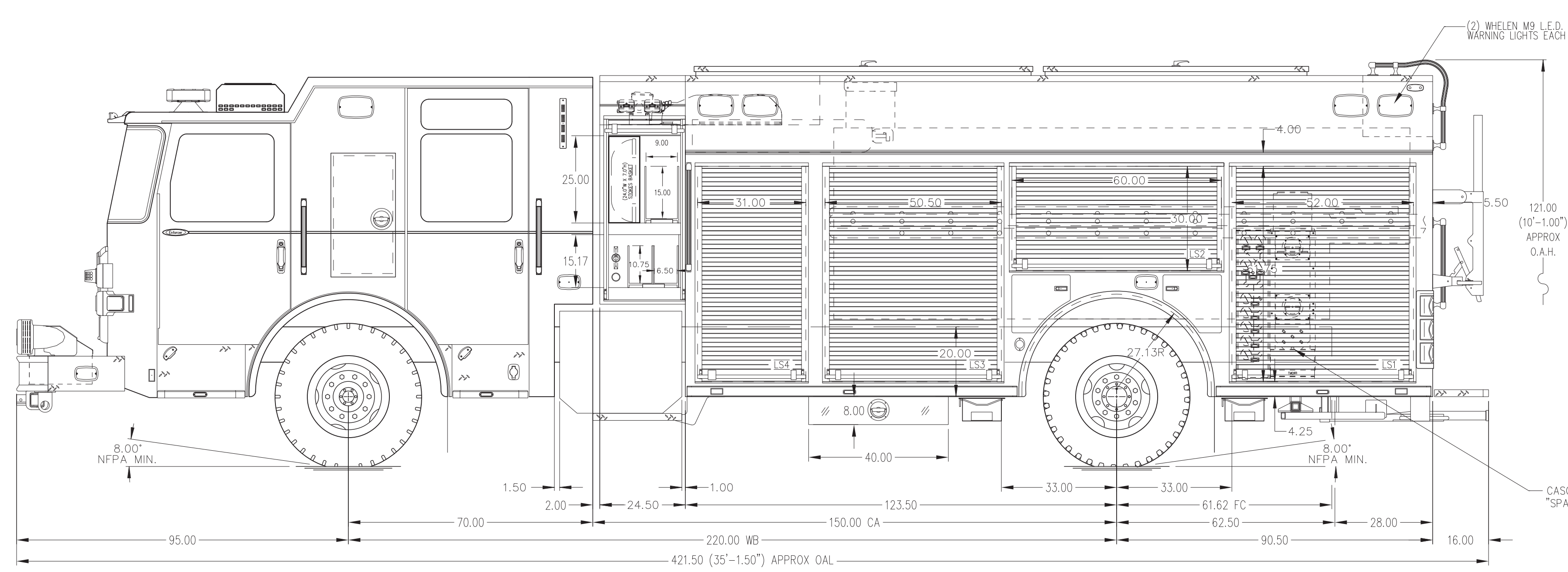


HOSEBED CAPACITIES  
 ① 1000' OF 5.00\"/>



ALUMINUM BODY

SIDE ROLL AND FRONTAL IMPACT PROTECTION

**NOTE**  
 DIMENSIONS SHOWN ARE APPROXIMATE AND ARE SUBJECT TO MINOR DEVIATIONS AS MAY OCCUR OR BE NECESSARY IN CONSTRUCTION. MINOR DETAILS NOT SHOWN.

1. ONSPOT AUTOMATIC TIRE CHAINS TO BE PROVIDED AT REAR
2. AIR INLET WITH DISCONNECT COUPLING IN DRIVER SIDE PUMP PANEL
3. SHORELINE RECEPTACLE LOCATED IN DRIVER SIDE STEP WELL
4. BATTERY CHARGER LOCATED BEHIND DRIVER'S SEAT
5. BATTERY CHARGE INDICATOR LOCATED ON THE DRIVER SIDE SEAT RISER

REV	DATE	BY	CH	ENFORCER
1	11DEC24	KRG	-	PIERCE
2	06DEC24	KRG	-	MODEL

		TITLE	1500-D-1000P, 214\"/>	
		FOR	FRIENDSHIP FIRE COMPANY ROARING SPRINGS, PA	
DWG NO.	PRELIMINARY PRINT ONLY		CHECKED BY	N/A
			SHEET SIZE	D
			SHEET NO.	1 OF 1

NFPA 1900 (2024) COMPLIANT