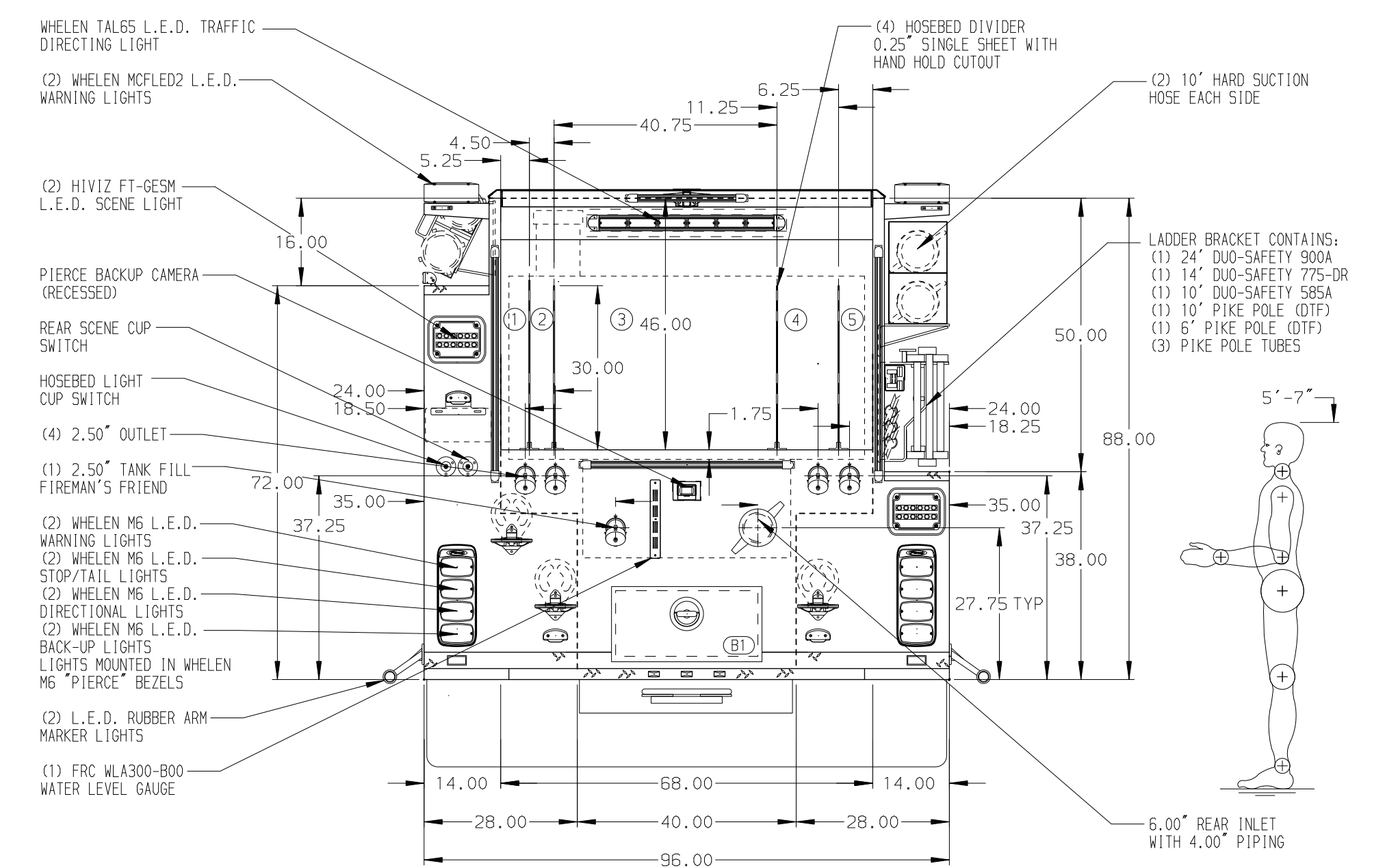
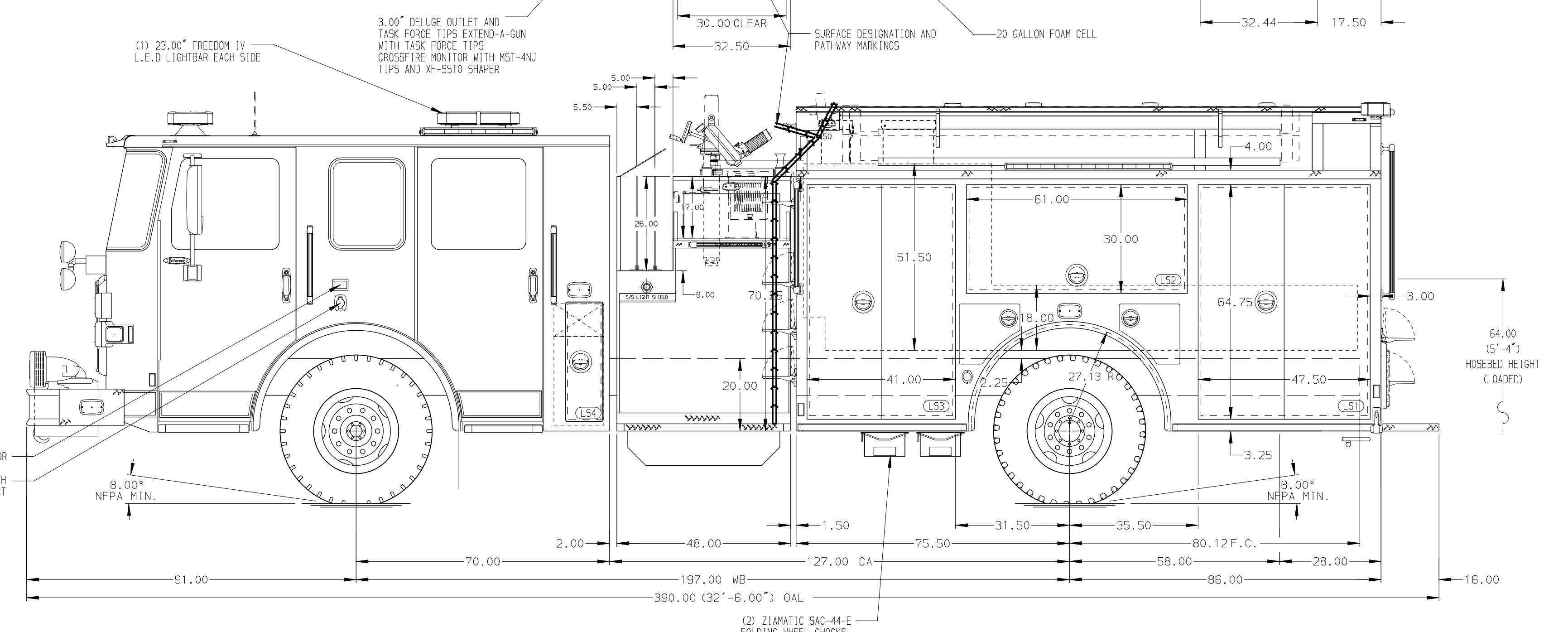


- HOSEBED CAPACITIES
- 200' OF 2.50" D.J. POLY HOSE
 - 300' OF 2.00" D.J. POLY HOSE
 - 1500' OF 5.00" LDH HOSE
 - 500' OF 3.00" D.J. POLY HOSE
 - 200' OF 3.00" D.J. POLY HOSE



STAINLESS STEEL BODY

MAXIMUM O.A.H. 115.00"

SIDE ROLL AND FRONTAL IMPACT PROTECTION

CUSTOMER APPROVAL

APPROVED BY: _____
DATE: _____



JOB NO. 36824

SCALE 1:24 DATE

NOTE
DIMENSIONS SHOWN ARE APPROXIMATE AND ARE SUBJECT TO MINOR DEVIATIONS AS MAY OCCUR OR BE NECESSARY IN CONSTRUCTION. MINOR DETAILS NOT SHOWN.

- BATTERY CHARGER LOCATED BEHIND DRIVER'S SEAT
- DUAL L.E.D. LIGHT STRIPS LOCATED IN HOSE BED
- BRUSHED STAINLESS STEEL SCUPPLATE INSIDE EACH BODY COMPARTMENT DOOR
- FIVE FULL WIDTH/DEPTH ADJUSTABLE SHELF IN COMPARTMENT PER ORDER
- TWO FLOOR MOUNTED SLIDE-OUT TRAY IN COMPARTMENT PER ORDER
- AKRON EDUCATOR SINGLE AGENT FOAM SYSTEM
- AIR INLET LOCATED PER ORDER

| | | | | |
|--------------|---------|---|------------|-----------|
| CHASSIS DATA | TITLE | 2000-D-770P, 750 GAL OF WATER W/ 20 GAL FOAM CELL | DRAWN BY | 05NOV21 |
| MAKE | FOR | 161" FH FDLER L.S., LOW FDLER R.S., LADDER BRACKETS | CHECKED BY | 18NOV21 |
| PIERCE | | MILTON FIRE DEPARTMENT | SHEET SIZE | SHEET NO. |
| MODEL | DWG NO. | MILTON, PA | D | 1 OF 1 |
| 17DEC21 | KES | WKL | 36824AD | |
| REV | DATE | BY | CH | ENFORCER |