

AVAILABLE FOR PURCHASE!



2024 Pierce Saber Pumper with 10" Raised Roof
GLICK Fire Equipment Demo Unit – Job# 39969
Contact your Area Account Manager or sales@glickfire.com

TOP FEATURES:

- Cummins L9, 450 hp engine
- Waterous 1,500 GPM pump
- 1,000-gallon water tank
- New York style hose bed
- 19-inch extended bumper with hose tray
- Jake Brake with aggressive downshift
- Front bumper 1.50" discharge
- 6.00" front intake
- 3.00" Deluge Riser with TFT Extend-a-Gun XG18
- Akron 3426 monitor with stack tips
- Pierce Back-up Camera System
- HiViz GESM LED Scene Lighting
- Whelen LED warning light package
- Seating for 6 firefighters

Wheelbase: 184.00" • Overall Height: 120.00" (10' 0") • Overall Length: 362.00" (30' 2.00")

GLICK
FIRE EQUIPMENT COMPANY, INC.

Locations in
CLINTON, BUTLER, LANCASTER,
MONTGOMERY and WASHINGTON COUNTIES
717-299-4120 • www.GlickFire.com



SERVICE • MOBILE SERVICE • FABRICATION • UPFIT • GRAPHICS • PAINT AND BODY SHOP

PUMPER BODY

Long Aluminum 2nd Gen Pumper

CHASSIS
Saber Chassis

CHASSIS

AXLE, FRONT, CUSTOM

18,000 lb Dana Axle

AXLE, REAR

27,000 lb Dana Axle

ENGINE

450 HP Cummins L9 Engine

TRANSMISSION

Allison 6th Gen, 3000 EVS P

BUMPER

19" Extended Painted Steel

CAB

6010 Enforcer Cab

BODY

WATER TANK

1000 Gallon New York Style Water Tank

COMPT, PUMPER, REAR

30.75" FF RollUp Rear Compt

COMPT, PUMPER, LEFT SIDE

161" RollUp Full Height Front & Rear FDLER

COMPT, PUMPER, RIGHT SIDE

161" RollUp Low FDLER

FIRE SUPPRESSION PUMPHOUSE

45" Control Zone Side Mount

PUMP

1500 GPM Waterous CX20

CROSSLAYS, 1.50"

(2) 1.50" Standard Capacity

CROSSLAYS, 2.50"

2.50" Crosslay Not Required

SPEEDLAYS

Speedlays Not Required

GENERATOR

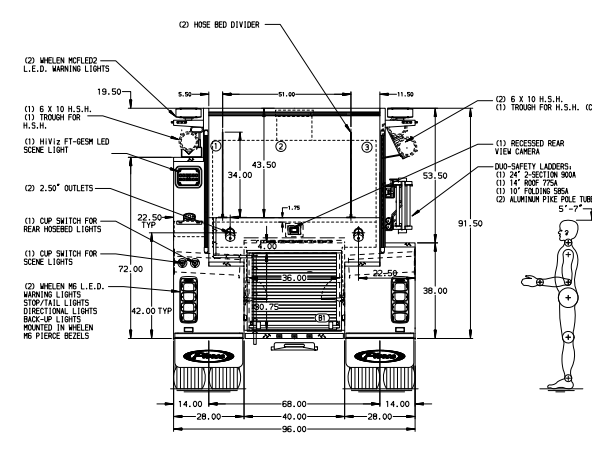
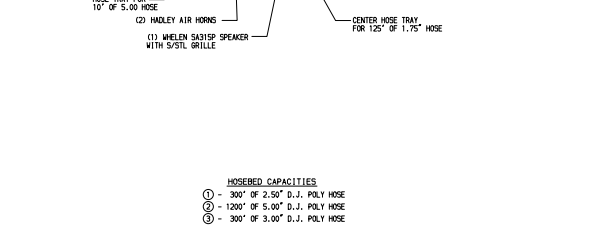
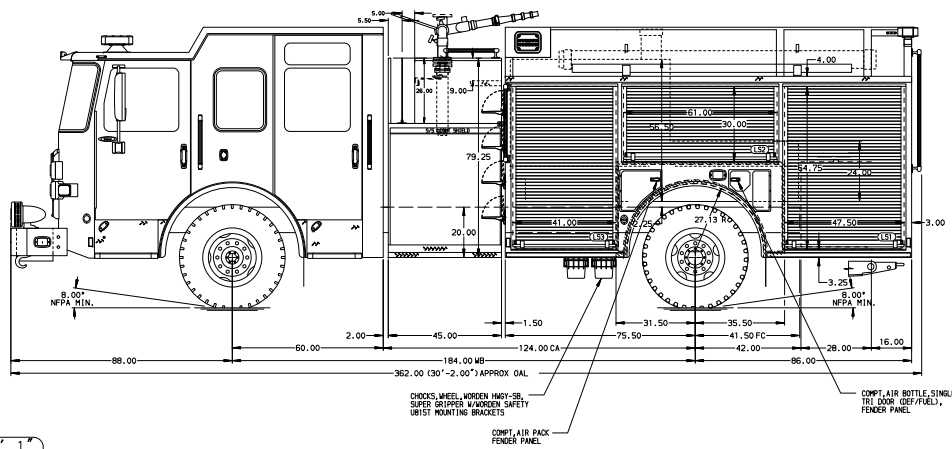
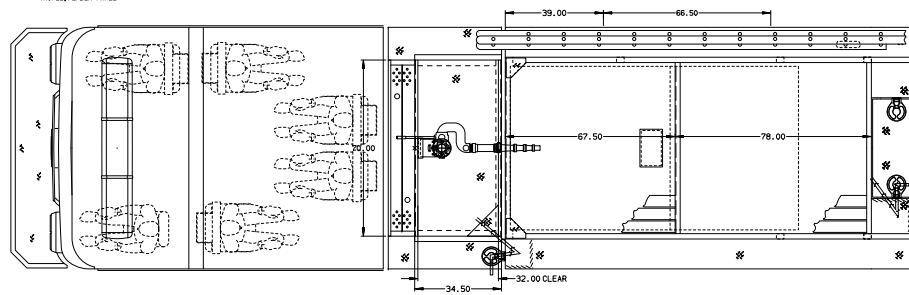
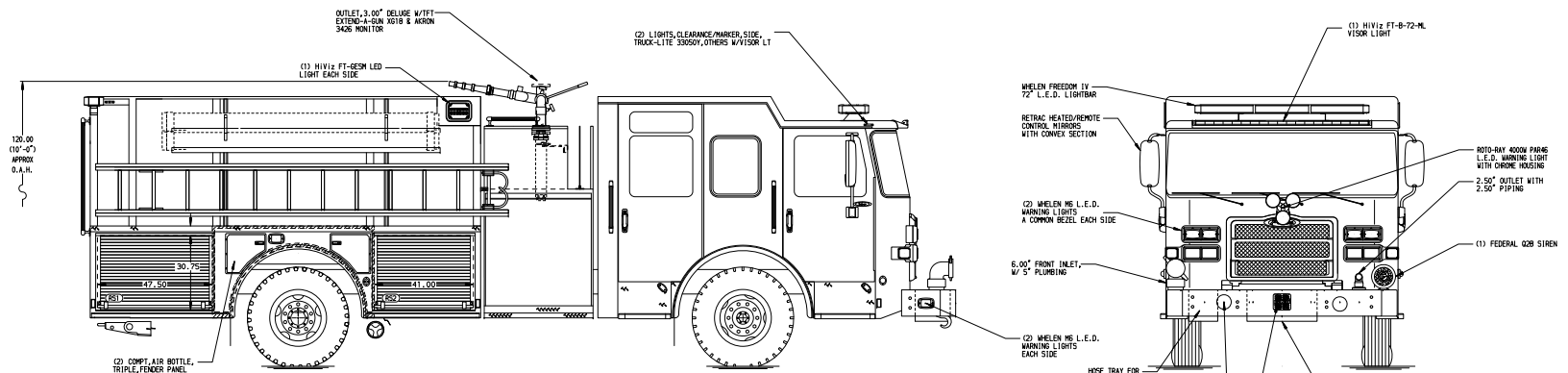
Generator Not Required

Foam System

Foam System Not Required

Foam Cell

Foam Cell Not Required



MAX O.A.H. - 10' 1"

NOTE
DIMENSIONS SHOWN ARE APPROXIMATE AND ARE SUBJECT TO MINOR DEVIATIONS AS MAY OCCUR OR BE NECESSARY IN CONSTRUCTION.
MINOR DETAILS NOT SHOWN.

				CHASSIS DATA	TITLE	Pierce Pumper Approval Drawing	JOB NO.	39969
				PIERCE	FOR	Glick Fire Equipment Co Inc	SCALE	1:24
16JAN24	RWR	-					DRAWN BY	WRE
18SEP23	RWR	JAP					CHECKED BY	MMHF
REV	DATE	BY	CH	SABER	FR		DWG NO.	39969AD
							SHEET SIZE	D
							SHEET NO.	1 of 1