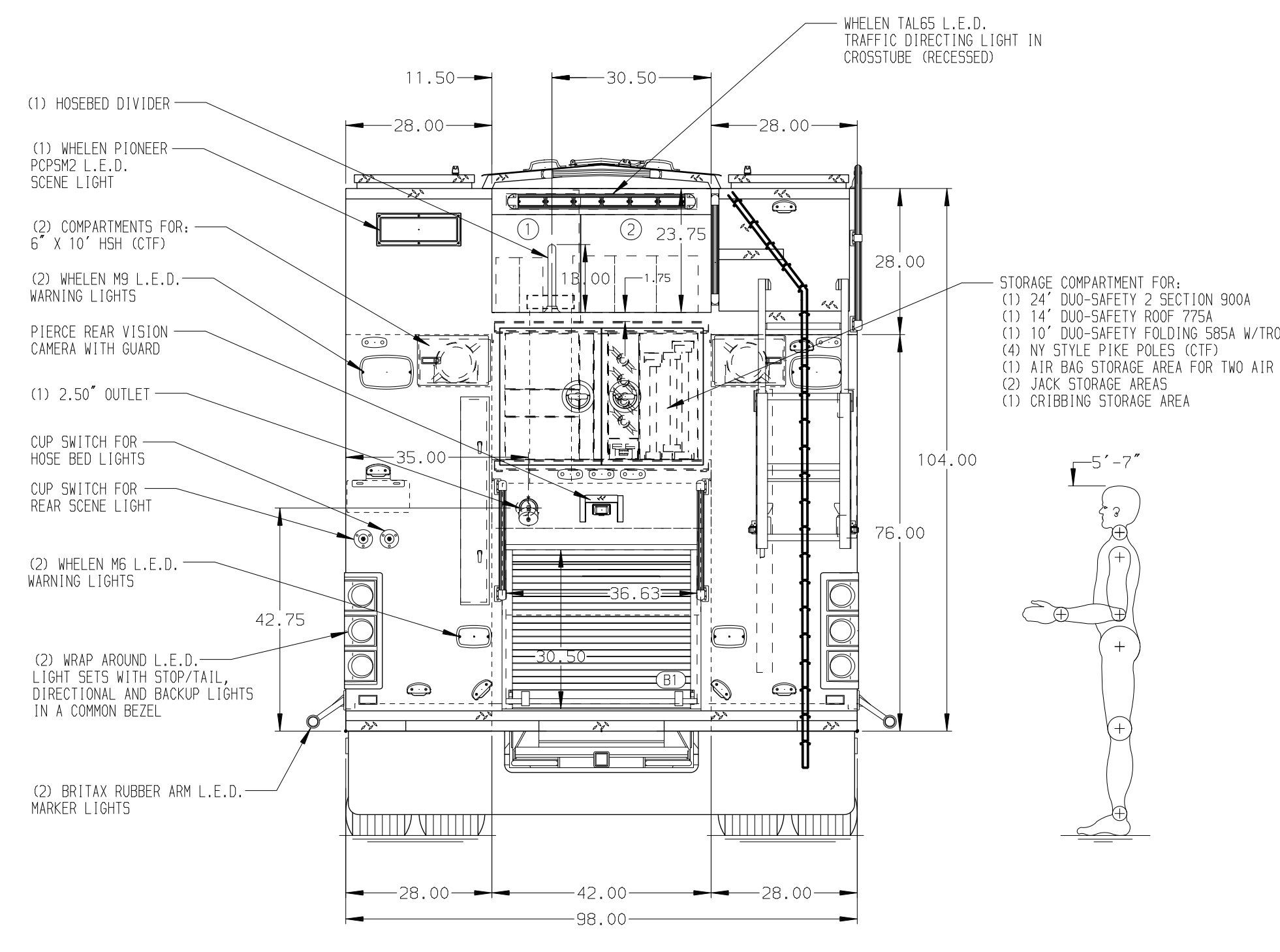


- HOSEBED CAPACITIES**
- ① - 300' OF 2.50\"/>



ALUMINUM BODY

SIDE ROLL AND FRONTAL IMPACT PROTECTION

NOTE
DIMENSIONS SHOWN ARE APPROXIMATE AND ARE SUBJECT TO MINOR DEVIATIONS AS MAY OCCUR OR BE NECESSARY IN CONSTRUCTION. MINOR DETAILS NOT SHOWN.

1. ONSPOT AUTOMATIC TIRE CHAINS TO BE PROVIDED AT REAR
2. AIR OUTLET WITH SHUT OFF VALVE AT DRIVER'S SIDE PUMP PANEL
3. WARN 10,000LB PORTABLE WINCH WITH 100' OF NYLON REINFORCED SYNTHETIC ROPE
4. L.E.D. LIGHT STRIP IN FRONT BUMPER HOSE TRAY COVER
5. BATTERY CHARGER LOCATED BEHIND DRIVER'S SEAT
6. DUAL L.E.D. LIGHT STRIPS LOCATED IN HOSE BED
7. DUAL L.E.D. LIGHT STRIPS LOCATED IN CARGO AREA
8. NINE DUAL L.E.D. LIGHT STRIPS ON COMPARTMENT DOORS PER ORDER
9. L.E.D. LIGHT STRIPS IN HATCH COMPARTMENTS PER ORDER
10. ONE FIXED FULL WIDTH/DEPTH SHELF LOCATED IN COMPARTMENT PER ORDER
11. EIGHT FULL WIDTH/DEPTH ADJUSTABLE SHELVES LOCATED IN COMPARTMENTS PER ORDER
12. ONE SLIDE OUT TRAY LOCATED IN COMPARTMENT PER ORDER
13. TWO TILTY SLIDE OUT TRAYS LOCATED IN COMPARTMENT PER ORDER
14. TWO SINGLE HAND CABLE OPERATION ON TILTY SLIDE OUT TRAYS PER ORDER
15. ONE FLOOR MOUNTED TRAY WITH SIDE SLIDES LOCATED IN COMPARTMENT PER ORDER
16. ONE CTECH DRAWER ASSEMBLY LOCATED IN COMPARTMENT PER ORDER
17. THREE SLIDE OUT TOOLBARS WITH PCB BOARD LOCATED IN COMPARTMENTS PER ORDER
18. PARTITION BETWEEN COMPARTMENTS LS1/B1 & RS1/B1
19. TWO VERTICAL PARTITIONS LOCATED IN COMPARTMENTS PER ORDER
20. TWO NYLON RETENTION STRAP WEBBINGS LOCATED IN COMPARTMENT PER ORDER
21. TWO COVERS OVER CASCADE BOTTLES IN HATCH COMPARTMENTS PER ORDER
22. ONE PERMANENT SHELF WITH INVERTED LIP LOCATED IN COMPARTMENT PER ORDER
23. SIX AIR BOTTLE STORAGE BINS LOCATED IN COMPARTMENT PER ORDER
24. OIL DRY HOPPER LOCATED IN HATCH COMPARTMENT PER ORDER
25. L.E.D. LIGHTS IN CROSSLAY COMPARTMENTS PER ORDER
26. CIRCUIT BREAKER PANEL LOCATED IN COMPARTMENT PER ORDER
27. ONE HANNAY ELECTRIC REELING CORD REEL MODEL 1618-17-18 WITH 200' OF 10/4 YELLOW CORD LOCATED IN HATCH COMPARTMENT PER ORDER
28. TWO 15AMP 5 PLACE RECEPTACLE STRIPS LOCATED IN COMPARTMENTS PER ORDER
29. BREATHING AIR CASCADE SYSTEM 6000 LOCATED IN HATCH COMPARTMENTS PER ORDER
30. SPACE SAVER AIR CONTROL PANEL AND FILL ENCLOSURE FOR CASCADE SYSTEM LOCATED PER ORDER

REV	DATE	BY	CH	ENFORCER
15DEC23		SAM	ZWE	CHASSIS DATA
08NOV23		SAM	ZWE	MAKE
02NOV23		SAM	ZWE	PIERCE
01SEP23		SAM	ZWE	MODEL
07JUL23		SAM	GKH	

		JOB NO.	37887
		SCALE	DATE
TITLE	1500-D-500 GAL POLY, 214\"/>		
FOR	DUNNSTOWN FIRE COMPANY LOCK HAVEN, PENNSYLVANIA	CHECKED BY	CDU
DWG NO.	37887AD	SHEET SIZE	SHEET NO.
		D	OF