

PUMPER BODY

Medium Aluminum 2nd Gen Pumper

CHASSIS

Enforcer Chassis

CHASSIS AXLE, FRONT, CUSTOM

19,500 Lb TAK-4 Axle

AXLE, REAR

27,000 Lb Dana Axle

ENGINE

450 HP Cummins X10 Engine

TRANSMISSION

Allison 6th Gen, 3000 EVS P

BUMPER

19" Extended Painted Steel

CAB

7010 Enforcer Cab

BODY WATER TANK

7500 Gallon New York Style Water Tank

COMPT, PUMPER, REAR

30.75" FF RollUp Rear Compt

COMPT, PUMPER, LEFT SIDE

136" RollUp Full Height Front & Rear

COMPT, PUMPER, RIGHT SIDE

136" RollUp Low

FIRE SUPPRESSION PUMPHOUSE

48" Control Zone Side Mount

PUMP

2000 GPM Waterous CSU

CROSSLAYS, 1.50"

(2) 1.50" Standard Capacity

CROSSLAYS, 2.50"

(1) 2.50" Standard Capacity

SPEEDLAYS

SpeedLays Not Required

GENERATOR

6kW MSV

Foam System

Foam System Not Required

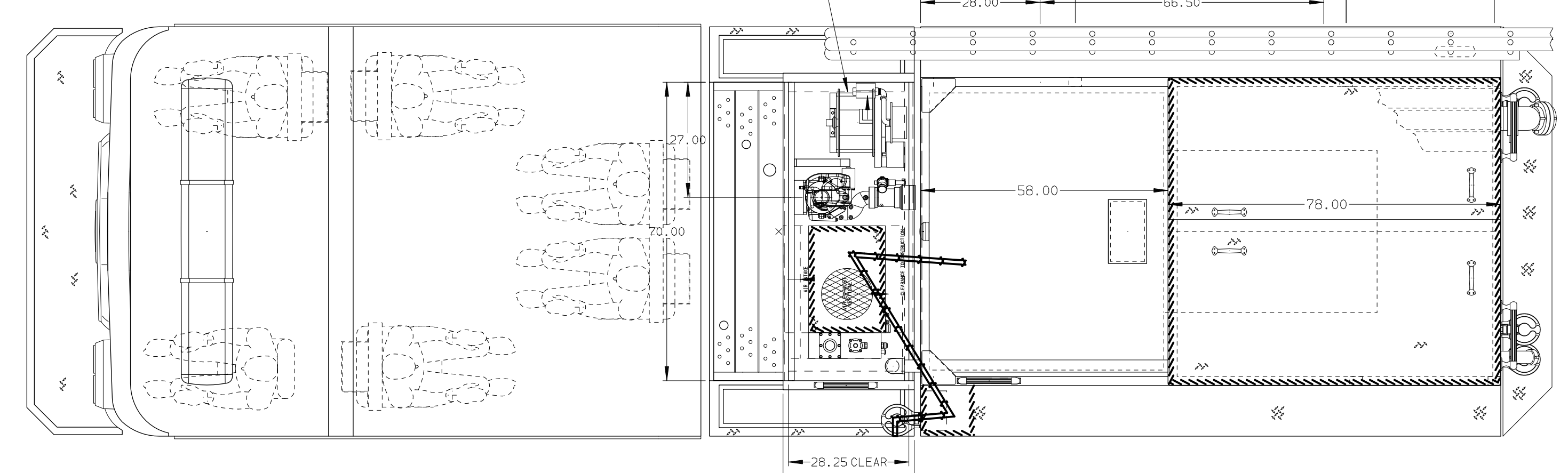
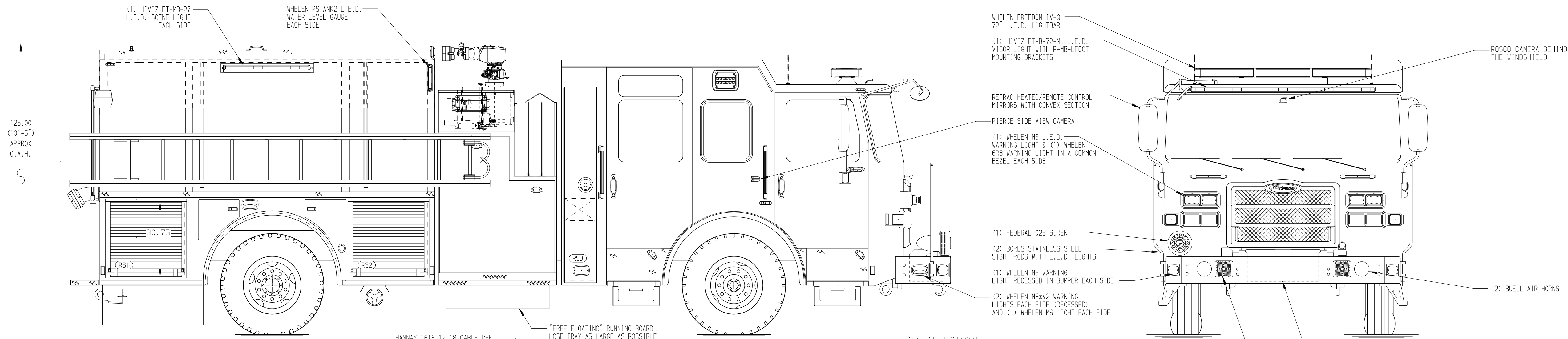
Foam Cell

Foam Cell Not Required

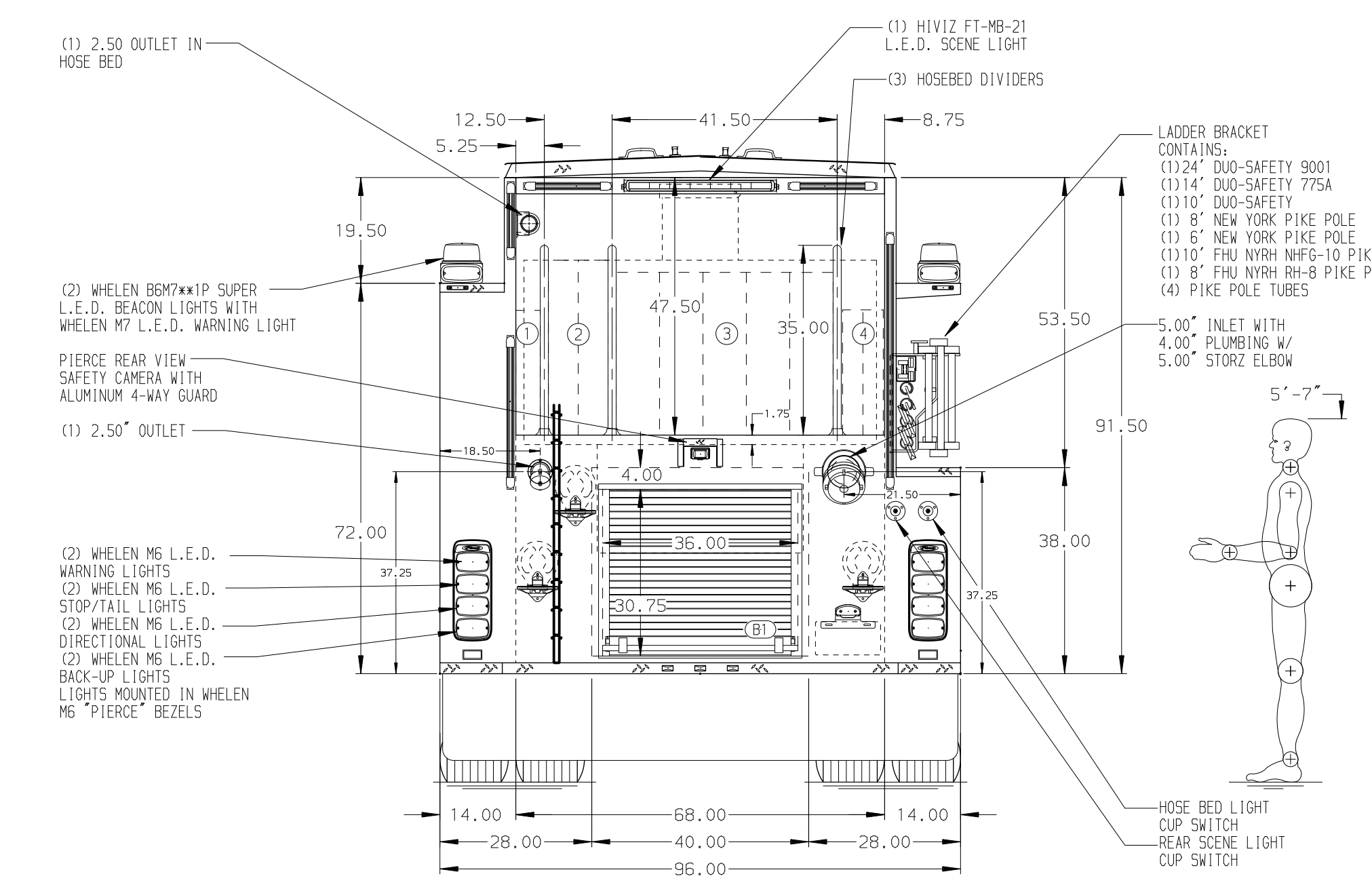
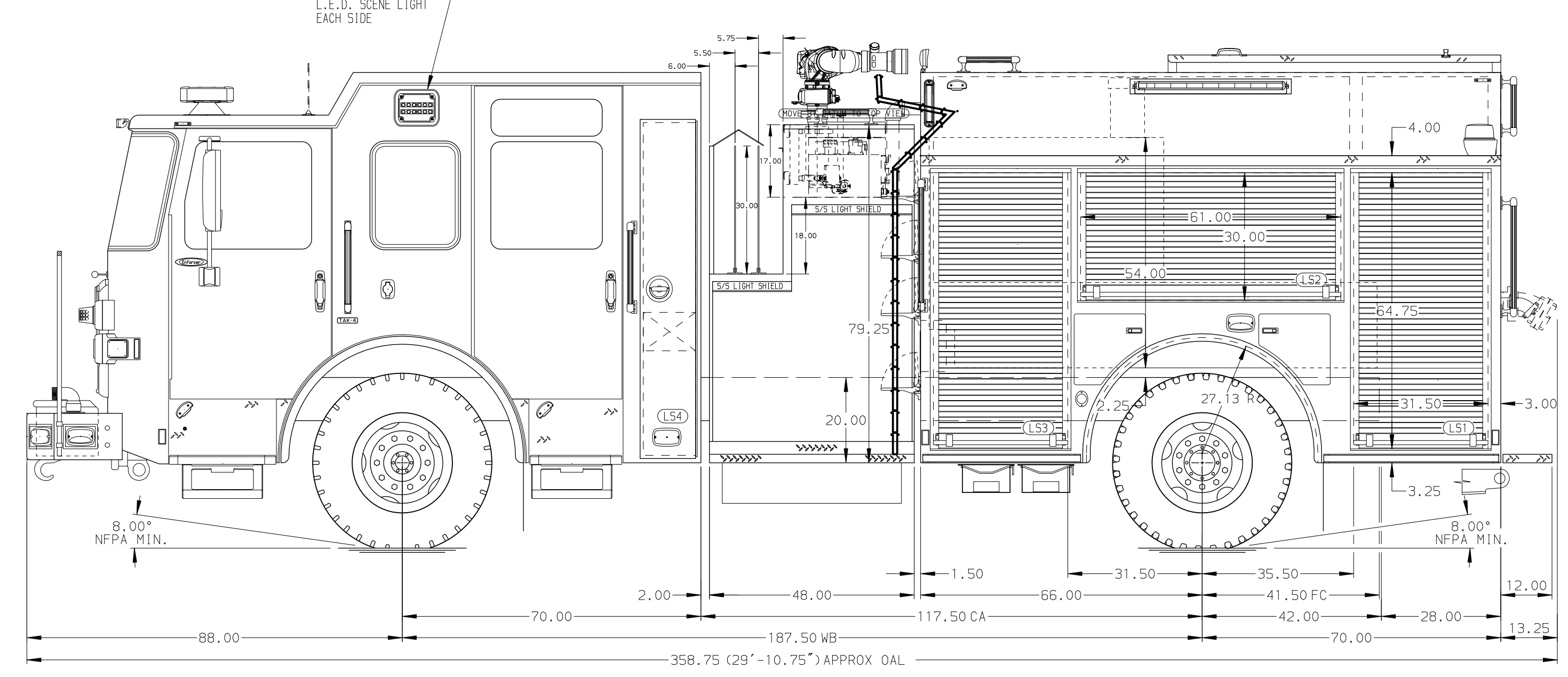
Side Roll and Frontal Impact Protection

NOTE
DIMENSIONS SHOWN ARE APPROXIMATE AND ARE SUBJECT TO MINOR DEVIATIONS AS MAY OCCUR OR BE NECESSARY IN CONSTRUCTION. MINOR DETAILS NOT SHOWN.

- ONE 1.50" OUTLET WITH 2.00" PIPING AND SWIVEL LOCATED ON TOP BUMPER LEFT SIDE
- SHORELINE RECEPTACLE WITH KUSSMAUL SUPER AUTO-EJECT LOCATED ON DRIVER SIDE OF THE CAB
- AIR INLET WITH DISCONNECT COUPLING IN THE DRIVER SIDE STEPWELL
- BATTERY CHARGER LOCATED PER ORDER
- BATTERY CHARGE INDICATOR LOCATED ON THE DRIVER SIDE SEAT RISER
- TWO ADJUSTABLE SHELVES LOCATED PER ORDER



HOSEBED CAPACITY	
BED 1	200' OF 1.75" D.J. POLY HOSE
BED 2	500' OF 3.00" D.J. POLY HOSE
BED 3	1200' OF 5.00" D.J. POLY HOSE
BED 4	400' OF 2.00" D.J. POLY HOSE



		JOB NO.	38984
		SCALE	DATE
		DRAWN BY	19APR23
		CHECKED BY	19APR23
		SHEET SIZE	SHEET NO.
		D	1 OF 1

REV	DATE	BY	CH	ENFORCER
1	12SEP23	MMF	GKH	PIERCE
2	22JUN23	MMF	COS	MODEL

CHASSIS DATA	TITLE	Pierce Pumper Approval Drawing
MAKE	FOR	Rivers Edge Volunteer Fire Department
MODEL	DWG NO.	38984AD