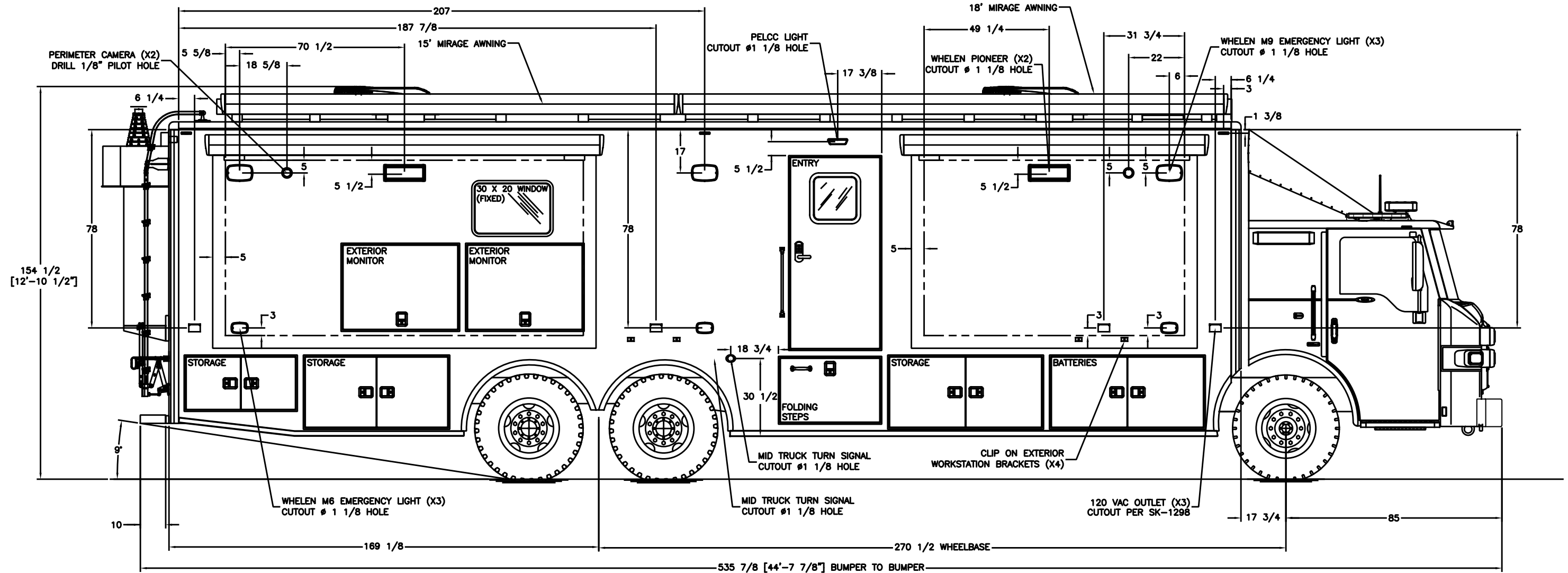


REVISIONS					
CHK DATE	CHK BY	DESCRIPTION	DATE	BY	REV
10/13/22	JRP	INITIAL RELEASE	10/13/22	JAA	00



DO NOT SCALE THIS DRAWING  
 DIMENSIONS ARE IN INCHES  
 UNLESS OTHERWISE SPECIFIED

TOLERANCES:  
 ANGULAR: ± 1° BEND: ± 1"  
 2 PLACE DECIMAL ± .010  
 3 PLACE DECIMAL ± .005  
 FRACTIONS ± 1/16

JOB NUMBER OR PRODUCT LINE  
**91974**

SHEET 1 OF 1 SCALE 40

MATERIAL N/A

FINISH N/A

DRAWN BY JAA DATE 10/13/22

CHECKED BY JRP DATE 10/13/22

**FRONTLINE COMMUNICATIONS**  
 A Division of Pierce Manufacturing Inc.

12770 44th Street North  
 Clearwater, FL 33762-4713  
 (727) 573-0400  
 FAX (727) 571-3295

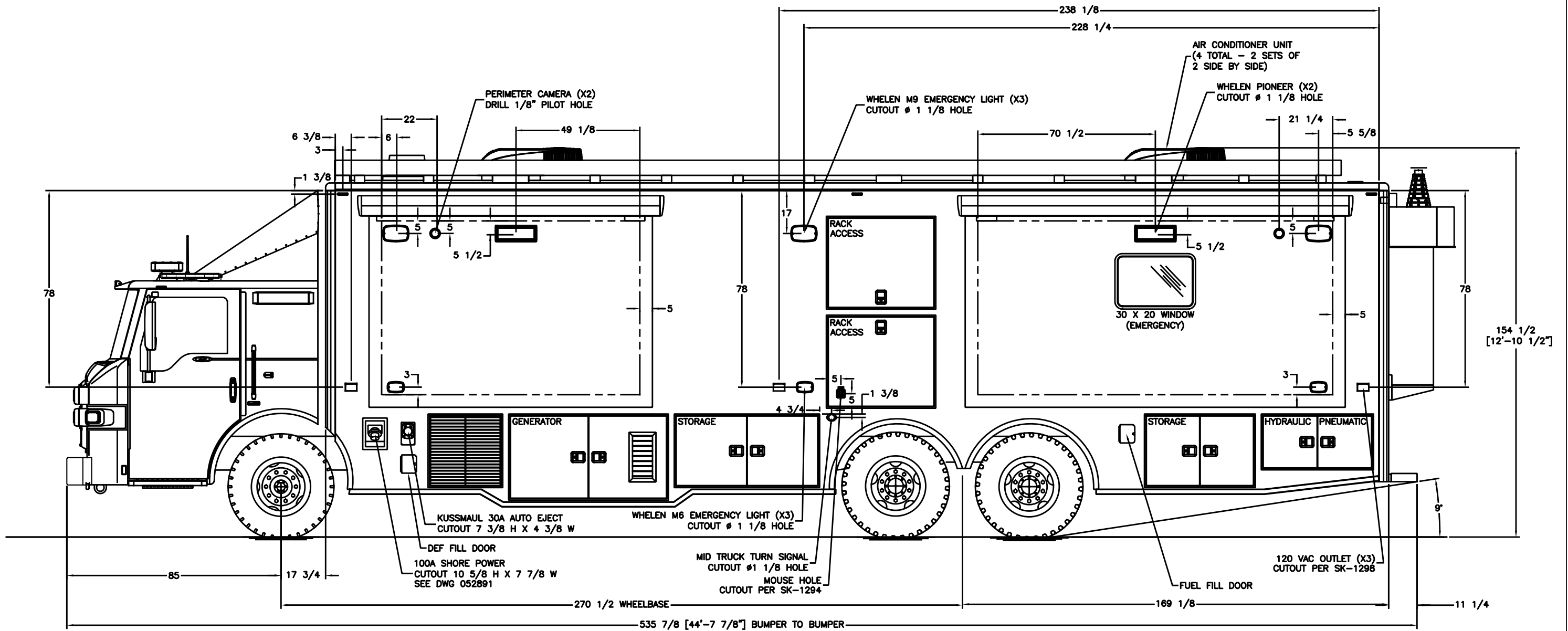
**EXTERIOR LAYOUT CURB SIDE**

SIZE **B** DWG NO. **91974-50200**

THIS DRAWING IS THE PROPERTY OF FRONTLINE COMMUNICATIONS CORPORATION. IT IS CONFIDENTIAL AND ALL RIGHTS ARE RESERVED. IT SHALL NOT BE REPRODUCED, COPIED, LENT, NOR USED FOR ANY PURPOSE OTHER THAN THAT FOR WHICH IT IS SPECIFICALLY FURNISHED.

----- INSIDE EDGE OF FRAME TUBE

REVISIONS						
CHK	DATE	CHK BY	DESCRIPTION	DATE	BY	REV
10/13/22		JRP	INITIAL RELEASE	10/13/22	JAA	00

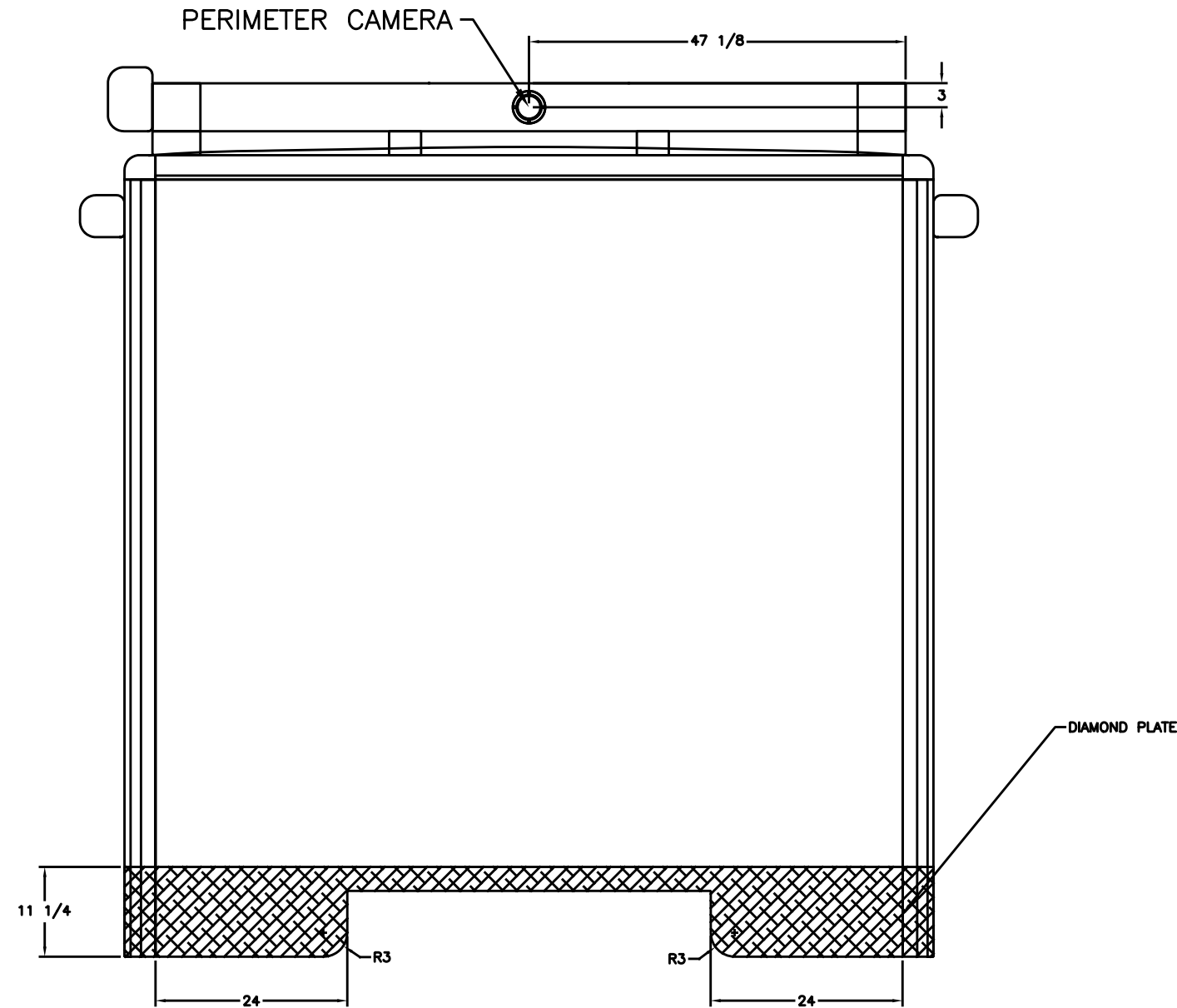


--- INSIDE EDGE OF FRAME TUBE

THIS DRAWING IS THE PROPERTY OF FRONTLINE COMMUNICATIONS CORPORATION. IT IS CONFIDENTIAL AND ALL RIGHTS ARE RESERVED. IT SHALL NOT BE REPRODUCED, COPIED, LENT, NOR USED FOR ANY PURPOSE OTHER THAN THAT FOR WHICH IT IS SPECIFICALLY FURNISHED.

DO NOT SCALE THIS DRAWING DIMENSIONS ARE IN INCHES UNLESS OTHERWISE SPECIFIED	MATERIAL		N/A		<b>FRONTLINE</b> COMMUNICATIONS <small>A Division of Pierce Manufacturing Inc.</small>	12770 44th Street North Clearwater, FL 33762-4713 (727) 573-0400 FAX (727) 571-3295		
	FINISH		N/A			<b>EXTERIOR LAYOUT STREET SIDE</b>		
TOLERANCES: ANGULAR: ± 1° BEND: ± 1° 2 PLACE DECIMAL ± .010 3 PLACE DECIMAL ± .005 FRACTIONS ± 1/16	JOB NUMBER OR PRODUCT LINE		DRAWN BY		DATE			SIZE
	91974		JAA		10/13/22			
	SHEET	SCALE	CHECKED BY		DATE		B	91974-50300
	1 OF 1	40	JRP		10/13/22			

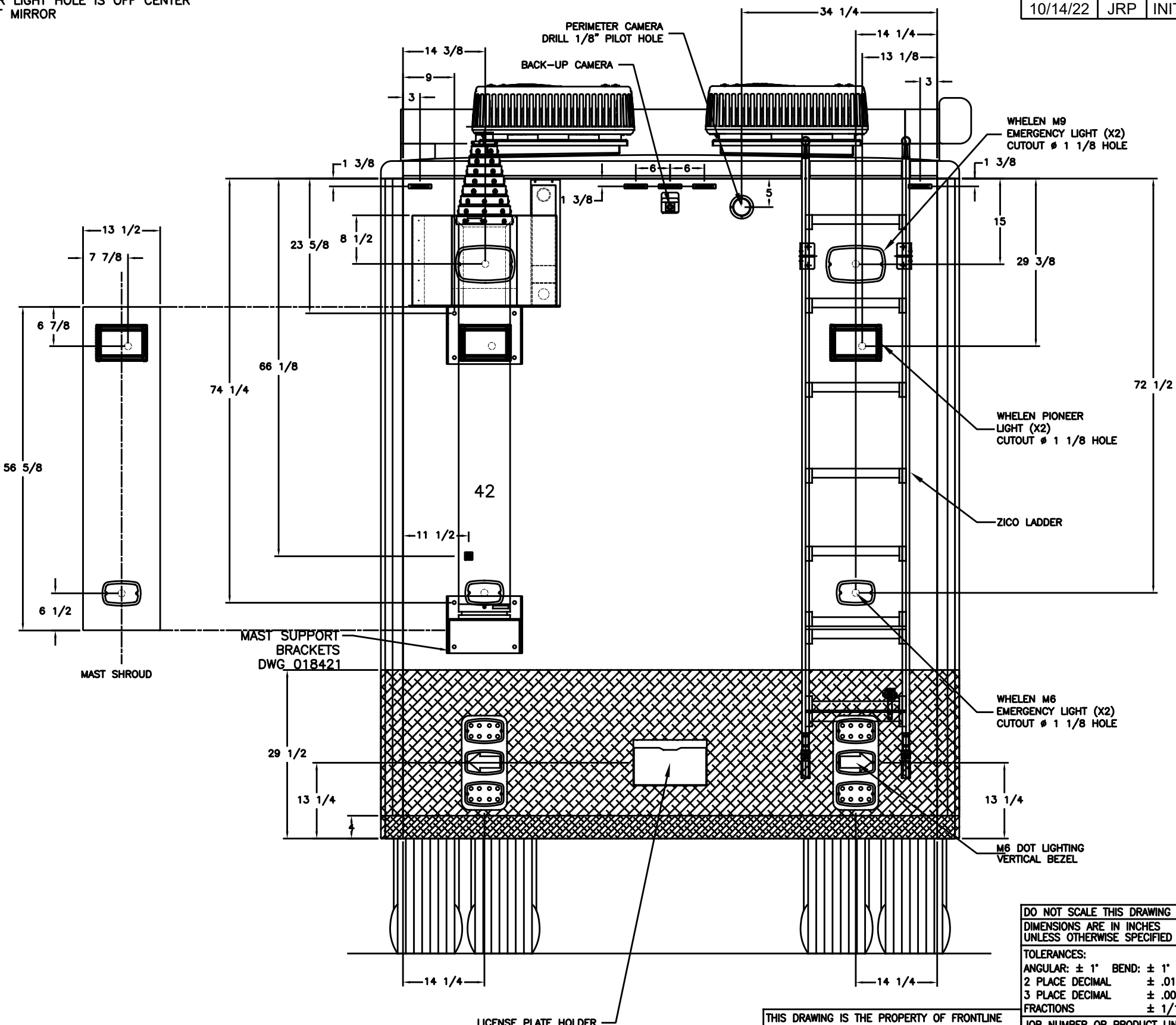
REVISIONS					
CHK DATE	CHK BY	DESCRIPTION	DATE	BY	REV
10/13/22	JRP	INITIAL RELEASE	10/13/22	JAA	00



THIS DRAWING IS THE PROPERTY OF FRONTLINE COMMUNICATIONS CORPORATION. IT IS CONFIDENTIAL AND ALL RIGHTS ARE RESERVED. IT SHALL NOT BE REPRODUCED, COPIED, LENT, NOR USED FOR ANY PURPOSE OTHER THAN THAT FOR WHICH IT IS SPECIFICALLY FURNISHED.

DO NOT SCALE THIS DRAWING DIMENSIONS ARE IN INCHES UNLESS OTHERWISE SPECIFIED		MATERIAL N/A		<b>FRONTLINE</b> COMMUNICATIONS <small>A Division of Pierce Manufacturing Inc.</small>		12770 44th Street North Clearwater, FL 33762-4713 (727) 573-0400 FAX (727) 571-3295	
TOLERANCES: ANGULAR: ± 1° BEND: ± 1" 2 PLACE DECIMAL ± .010 3 PLACE DECIMAL ± .005 FRACTIONS ± 1/16		FINISH N/A		<b>EXTERIOR LAYOUT FRONT WALL</b>			
JOB NUMBER OR PRODUCT LINE 91974		DRAWN BY JAA	DATE 10/13/22				
SHEET 1 OF 1	SCALE 20	CHECKED BY JRP	DATE 10/13/22	SIZE B	DWG NO. 91974-50400		

NOTE:  
PIONEER LIGHT HOLE IS OFF CENTER  
DO NOT MIRROR



REVISIONS					
CHK DATE	CHK BY	DESCRIPTION	DATE	BY	REV
10/14/22	JRP	INITIAL RELEASE	10/14/22	JAA	00

DO NOT SCALE THIS DRAWING  
DIMENSIONS ARE IN INCHES  
UNLESS OTHERWISE SPECIFIED

TOLERANCES:  
ANGULAR: ± 1° BEND: ± 1"  
2 PLACE DECIMAL ± .010  
3 PLACE DECIMAL ± .005  
FRACTIONS ± 1/16

JOB NUMBER OR PRODUCT LINE  
**91974**

SHEET 1 OF 1 SCALE 20

MATERIAL	N/A
FINISH	N/A
DRAWN BY	JAA
DATE	10/14/22
CHECKED BY	JRP
DATE	10/14/22

**FRONTLINE COMMUNICATIONS**  
A Division of Pierce Manufacturing Inc.

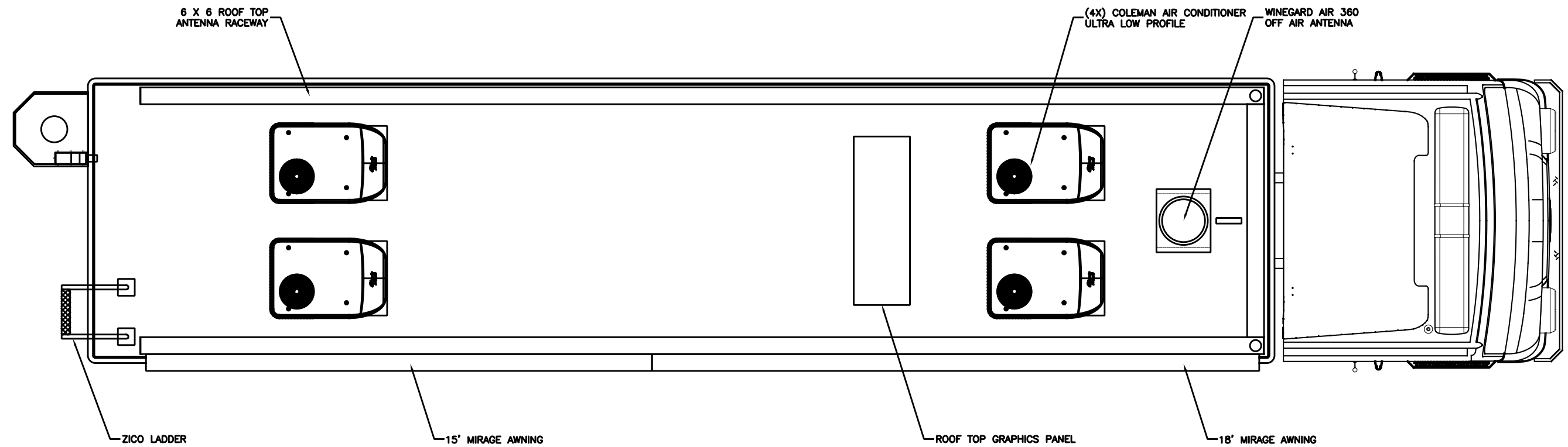
12770 44th Street North  
Clearwater, FL 33762-4713  
(727) 573-0400  
FAX (727) 571-3295

**EXTERIOR LAYOUT REAR WALL**

SIZE **B** DWG NO. **91974-50500**

THIS DRAWING IS THE PROPERTY OF FRONTLINE COMMUNICATIONS CORPORATION. IT IS CONFIDENTIAL AND ALL RIGHTS ARE RESERVED. IT SHALL NOT BE REPRODUCED, COPIED, LENT, NOR USED FOR ANY PURPOSE OTHER THAN THAT FOR WHICH IT IS SPECIFICALLY FURNISHED.

REVISIONS					
CHK DATE	CHK BY	DESCRIPTION	DATE	BY	REV
10/13/22	JRP	INITIAL RELEASE	10/13/22	JAA	00

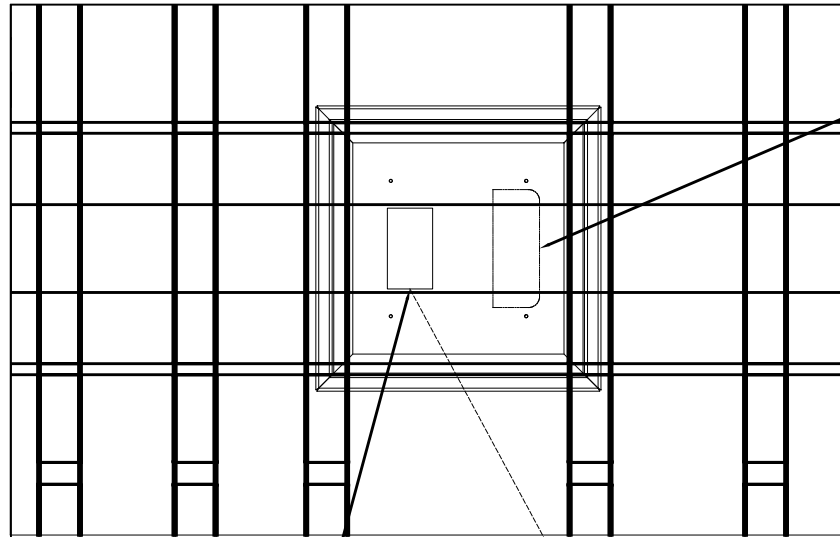


THIS DRAWING IS THE PROPERTY OF FRONTLINE COMMUNICATIONS CORPORATION. IT IS CONFIDENTIAL AND ALL RIGHTS ARE RESERVED. IT SHALL NOT BE REPRODUCED, COPIED, LENT, NOR USED FOR ANY PURPOSE OTHER THAN THAT FOR WHICH IT IS SPECIFICALLY FURNISHED.

DO NOT SCALE THIS DRAWING DIMENSIONS ARE IN INCHES UNLESS OTHERWISE SPECIFIED	
TOLERANCES: ANGULAR: ± 1° BEND: ± 1" 2 PLACE DECIMAL ± .010 3 PLACE DECIMAL ± .005 FRACTIONS ± 1/16	
JOB NUMBER OR PRODUCT LINE <b>91974</b>	
SHEET 1 OF 2	SCALE 40

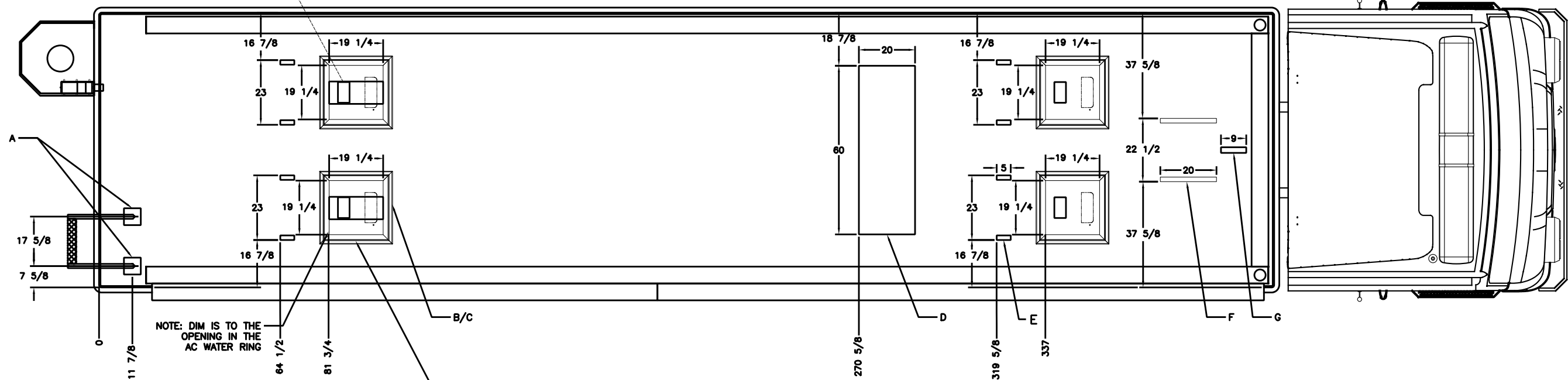
MATERIAL <b>SEE NOTES</b>	
FINISH <b>MILL FINISH</b>	
DRAWN BY JAA	DATE 10/13/22
CHECKED BY JRP	DATE 10/13/22

		12770 44th Street North Clearwater, FL 33762-4713 (727) 573-0400 FAX (727) 571-3295	
<b>EXTERIOR LAYOUT ROOF</b>			
SIZE <b>B</b>	DWG NO. <b>91974-50600</b>		



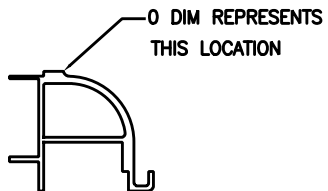
NOTE A/C ADAPTER PLATE ORIENTATION

(4X) CUTOUT 4.25 X 7.50  
MARK A/C DUCT USING  
DWG NO 053250  
AS A TEMPLATE



NOTE: DIM IS TO THE  
OPENING IN THE  
AC WATER RING

19.25 x 19.25 CUTOUT  
THRU DIAMOND PLATE ONLY  
MATCH AC WATER RING



0 DIM REPRESENTS  
THIS LOCATION

REVISIONS						
CHK	DATE	CHK BY	DESCRIPTION	DATE	BY	REV
10/13/22		JRP	INITIAL RELEASE	10/13/22	JAA	00

ITEM	QTY	DESCRIPTION	REMARK
G	1	CABLE COVER	2 X 1 X 1/8 X 9 AL TUBE
F	2	ALUMINUM UNISTRUT	1 5/8 X 1 5/8 X 20
E	12	ALUMINUM UNISTRUT	1 5/8 X 1 5/8 X 5
D	1	GRAPHICS PLATE	20 X 60 X 3/32 ALUMINUM PLATE
C	6	A/C ADAPTER PLATE	SEE DRAWING 053250 FOR DETAILS
B	6	A/C MOUNT BASE	SEE DRAWING 052889 FOR DETAILS
A	2	LADDER MOUNTING PLATE	6 X 6 X 1/2 ALUMINUM PLATE

THIS DRAWING IS THE PROPERTY OF FRONTLINE COMMUNICATIONS CORPORATION. IT IS CONFIDENTIAL AND ALL RIGHTS ARE RESERVED. IT SHALL NOT BE REPRODUCED, COPIED, LENT, NOR USED FOR ANY PURPOSE OTHER THAN THAT FOR WHICH IT IS SPECIFICALLY FURNISHED.

DO NOT SCALE THIS DRAWING DIMENSIONS ARE IN INCHES UNLESS OTHERWISE SPECIFIED	
TOLERANCES: ANGULAR: ± 1° BEND: ± 1° 2 PLACE DECIMAL ± .010 3 PLACE DECIMAL ± .005 FRACTIONS ± 1/16	
JOB NUMBER OR PRODUCT LINE <b>91974</b>	
SHEET 2 OF 2	SCALE 40

MATERIAL <b>SEE NOTES</b>	
FINISH <b>MILL FINISH</b>	
DRAWN BY JAA	DATE 10/13/22
CHECKED BY JRP	DATE 10/13/22

**FRONTLINE COMMUNICATIONS**  
A Division of Pierce Manufacturing Inc.

12770 44th Street North  
Clearwater, FL 33762-4713  
(727) 573-0400  
FAX (727) 571-3295

## EXTERIOR LAYOUT ROOF

SIZE **B** DWG NO. **91974-50600**