

**PUMPER BODY**

Medium Aluminum 2nd Gen Pumper

**CHASSIS**

Enforcer Chassis

**CHASSIS AXLE,FRONT,CUSTOM**

18,000 lb TAK-4 Axle

**AXLE,REAR**

27,000 lb Dana Axle

**ENGINE**

450 HP Cummins L9 Engine

**TRANSMISSION**

Allison 5th Gen, 3000 EVS P

**BUMPER**

22" Extended Painted Steel

**CAB**

7010 Enforcer Cab

**BODY WATER TANK**

1000 Gallon New York Style Water Tank

**COMPT,PUMPER,REAR**

28.75" FF Rollup Rear Compt

**COMPT,PUMPER,LEFT SIDE**

152" Lap Full Height Front & Rear FDLR

**COMPT,PUMPER,RIGHT SIDE**

152" Lap Low FDLR

**FIRE SUPPRESSION PUMPHOUSE**

45" Control Zone Side Mount

**PUMP**

1500 GPM Waterous CSU

**CROSSLAYS,1.50"**

(2) 1.50" Standard Capacity Mercedes Hose

**CROSSLAYS,2.50"**

2.50" Crosslay Not Required

**SPEEDLAYS**

Speedlays Not Required

**GENERATOR**

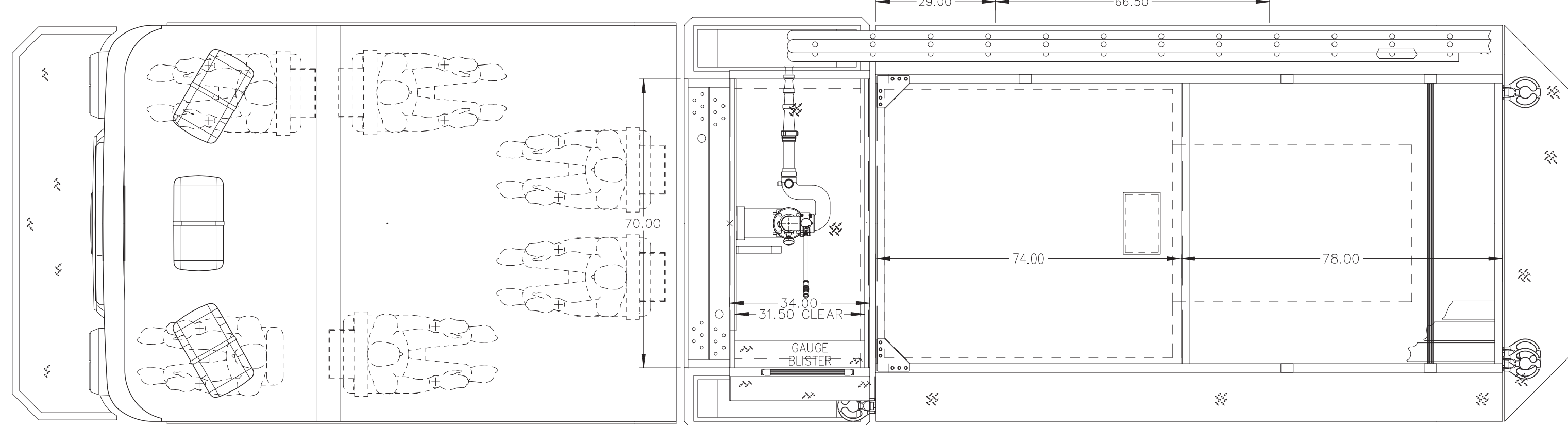
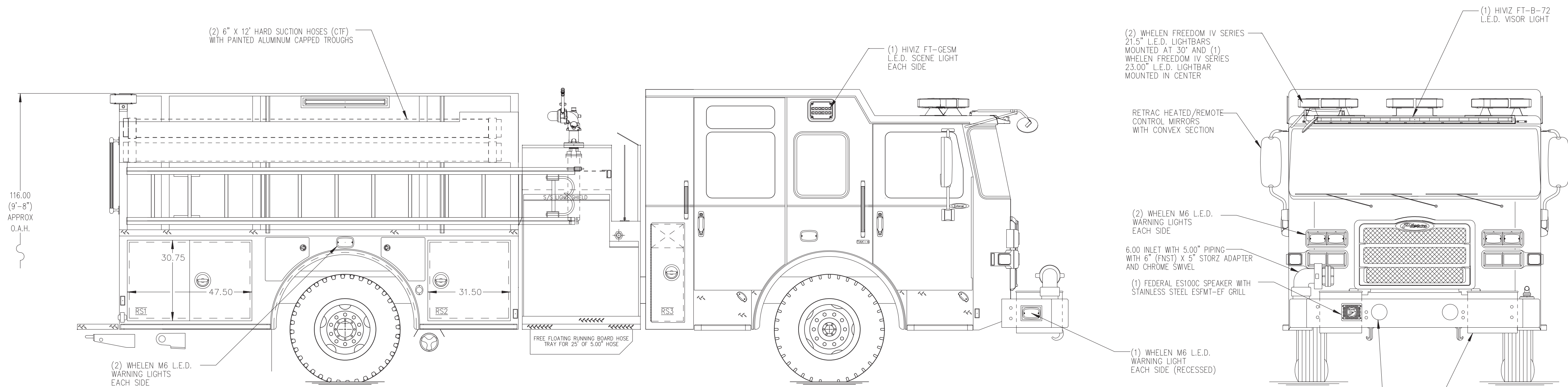
Generator Not Required

**Foam System**

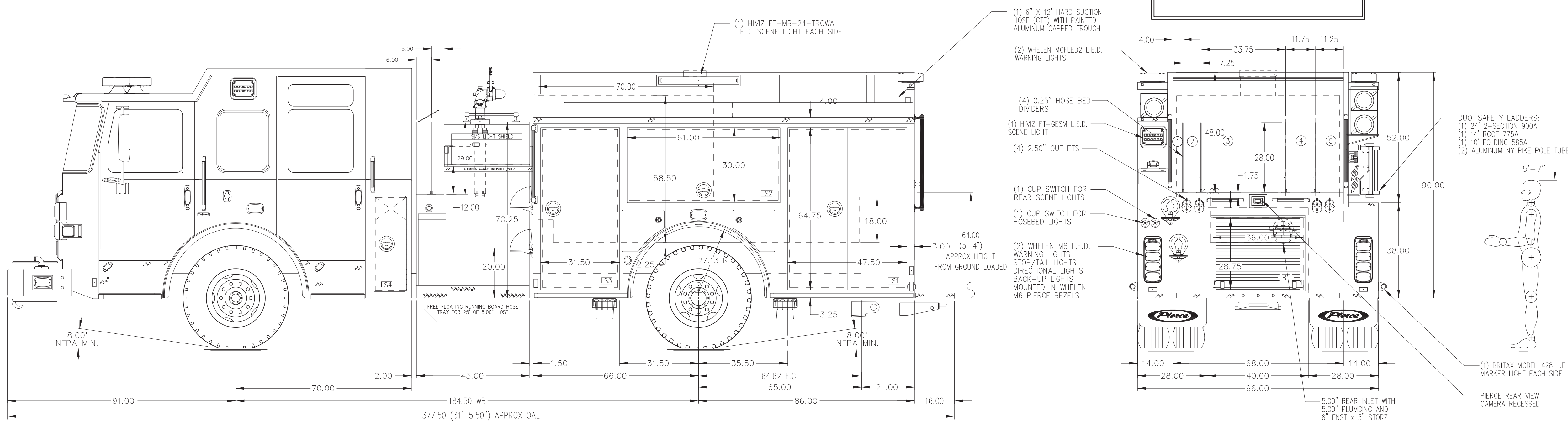
Foam System Not Required

**Foam Cell**

Foam Cell Not Required



HOSEBED CAPACITY	
BED 1	200' OF 1.75" D.J. POLY HOSE
BED 2	400' OF 1.75" D.J. POLY HOSE
BED 3	1200' OF 5.00" Mercedes Mega Flow HOSE
BED 4	400' OF 3.00" D.J. POLY HOSE
BED 5	400' OF 2.50" D.J. POLY HOSE



**NOTE**  
DIMENSIONS SHOWN ARE APPROXIMATE AND ARE SUBJECT TO MINOR DEVIATIONS AS MAY OCCUR OR BE NECESSARY IN CONSTRUCTION. MINOR DETAILS NOT SHOWN.

- 1. ONE 1.50 OUTLET WITH 2.00 PIPING AND SWIVEL LOCATED ON TOP OF BUMPER LEFT SIDE
- 2. SHORELINE RECEPTACLE WITH KUSSMAUL SUPER AUTO-EJECT LOCATED ON DRIVER SIDE OF THE CAB
- 3. AIR INLET WITH DISCONNECT COUPLING IN THE DRIVER SIDE STEPWELL
- 4. BATTERY CHARGER LOCATED IN COMPARTMENT PER SHOP ORDER
- 5. BATTERY CHARGE INDICATOR LOCATED ON THE DRIVER SIDE SEAT RISER

REV	DATE	BY	CH
200CT22	KRG	-	-

		JOB NO.	38488
		SCALE	DATE
TITLE	Pierce Pumper Approval Drawing	DRAWN BY	KRG
FOR	Glick Fire equipment Co Inc	CHECKED BY	11AUG22
DWG NO.	38488AD	SHEET SIZE	SHEET NO.
		D	1 OF 1