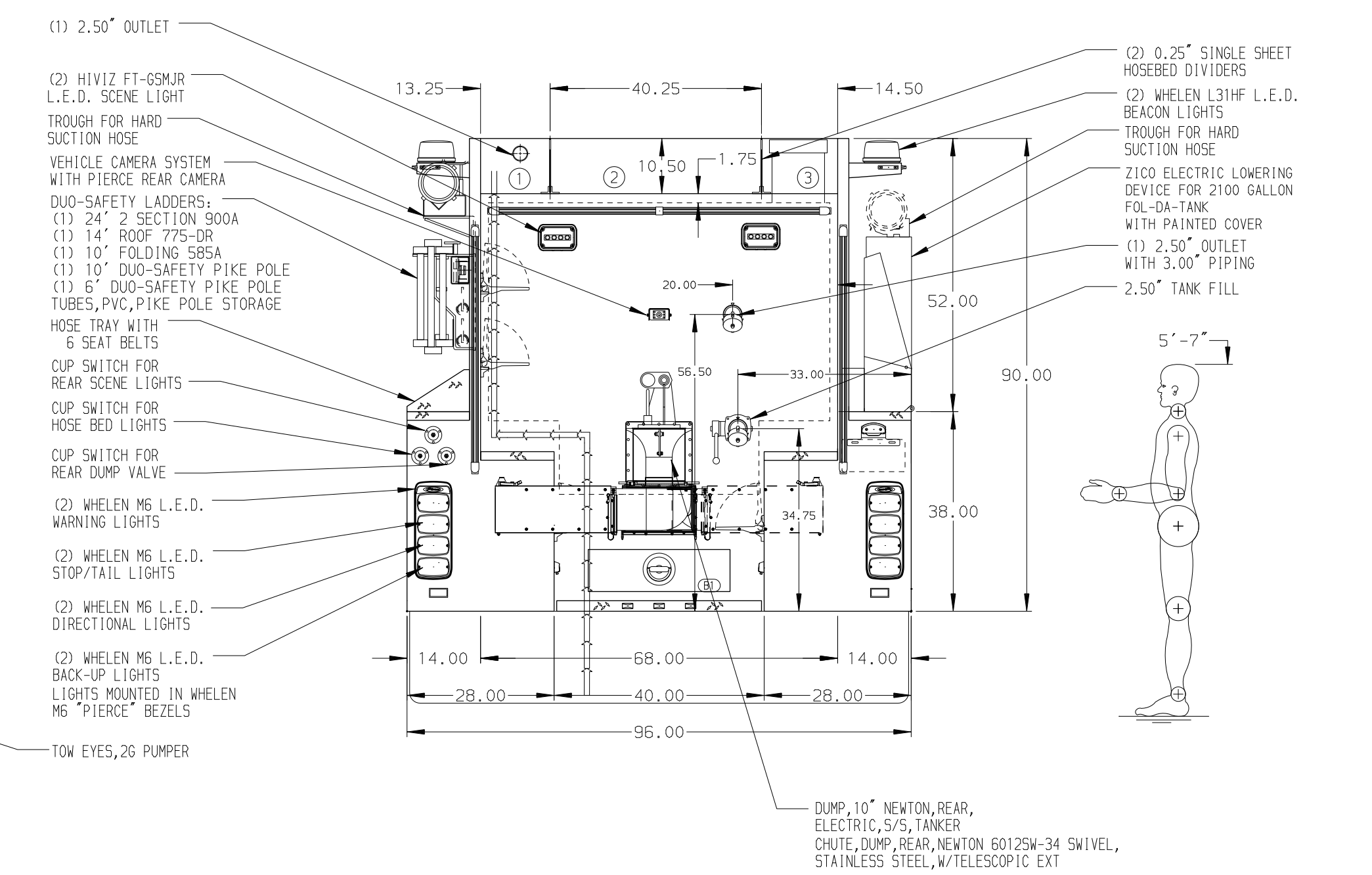
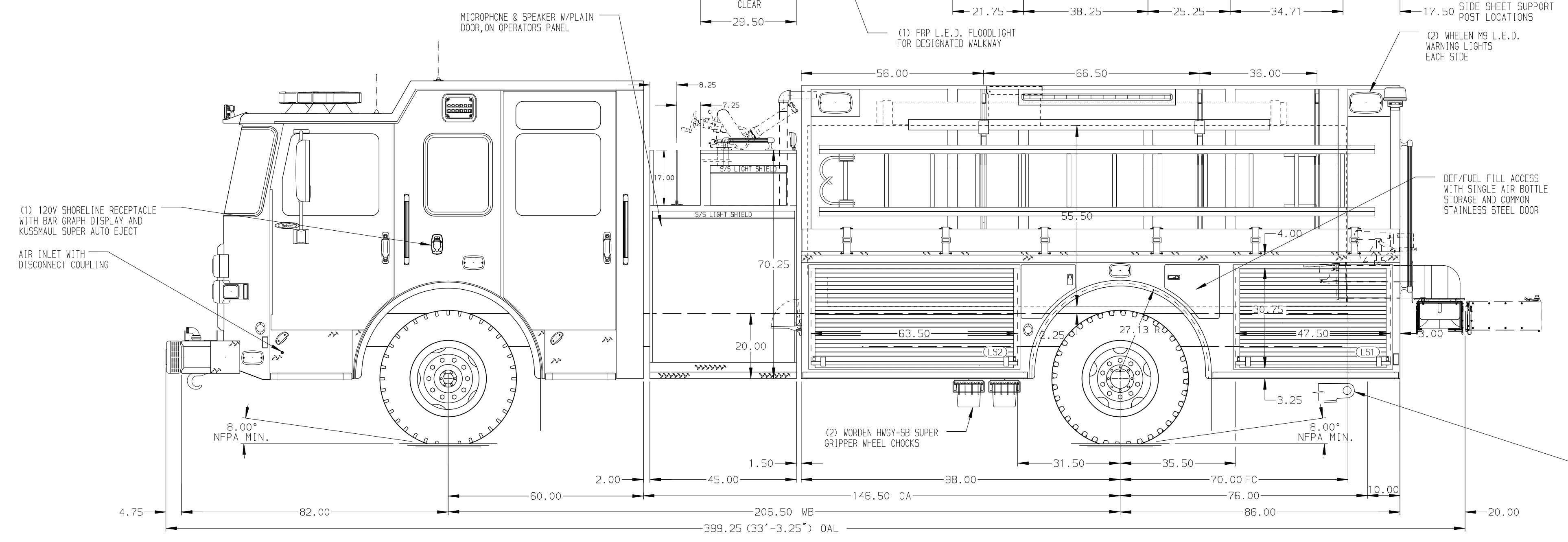


HOSEBED CAPACITIES

- 300' OF 2.00" D.J. HOSE
- 1000' OF 4.00" D.J. HOSE
- 200' OF 3.00" D.J. HOSE



ALUMINUM BODY

MAXIMUM O.A.L. 399.25"

MAXIMUM O.A.H. 120.00"

NOTE
DIMENSIONS SHOWN ARE APPROXIMATE AND ARE SUBJECT TO MINOR DEVIATIONS AS MAY OCCUR OR BE NECESSARY IN CONSTRUCTION. MINOR DETAILS NOT SHOWN.

REV	DATE	BY	CH	SABER FR
01MAR23	RHU	JAP		CHASSIS DATA
13OCT22	RHU	JAP		MAKE
12AUG22	RHU	JAP		PIERCE
14JUN22	CDU	CZA		MODEL

	JOB NO.	37843
	SCALE	DATE
TITLE	1500-D-2000P, 184" PUMPER TANKER, LOW SIDES	
FOR	(2) CROSSLAYS, LS LADDER BRACKETS, ZICO QUIC-LIFT WEST WILMERDING VOLUNTEER FIRE DEPARTMENT NORTH VERSAILLES, PENNSYLVANIA	
DWG NO.	37843AD	
DRAWN BY	LME	25MAY22
CHECKED BY	CDU	25MAY22
SHEET SIZE	D	SHEET NO. 1 OF 1