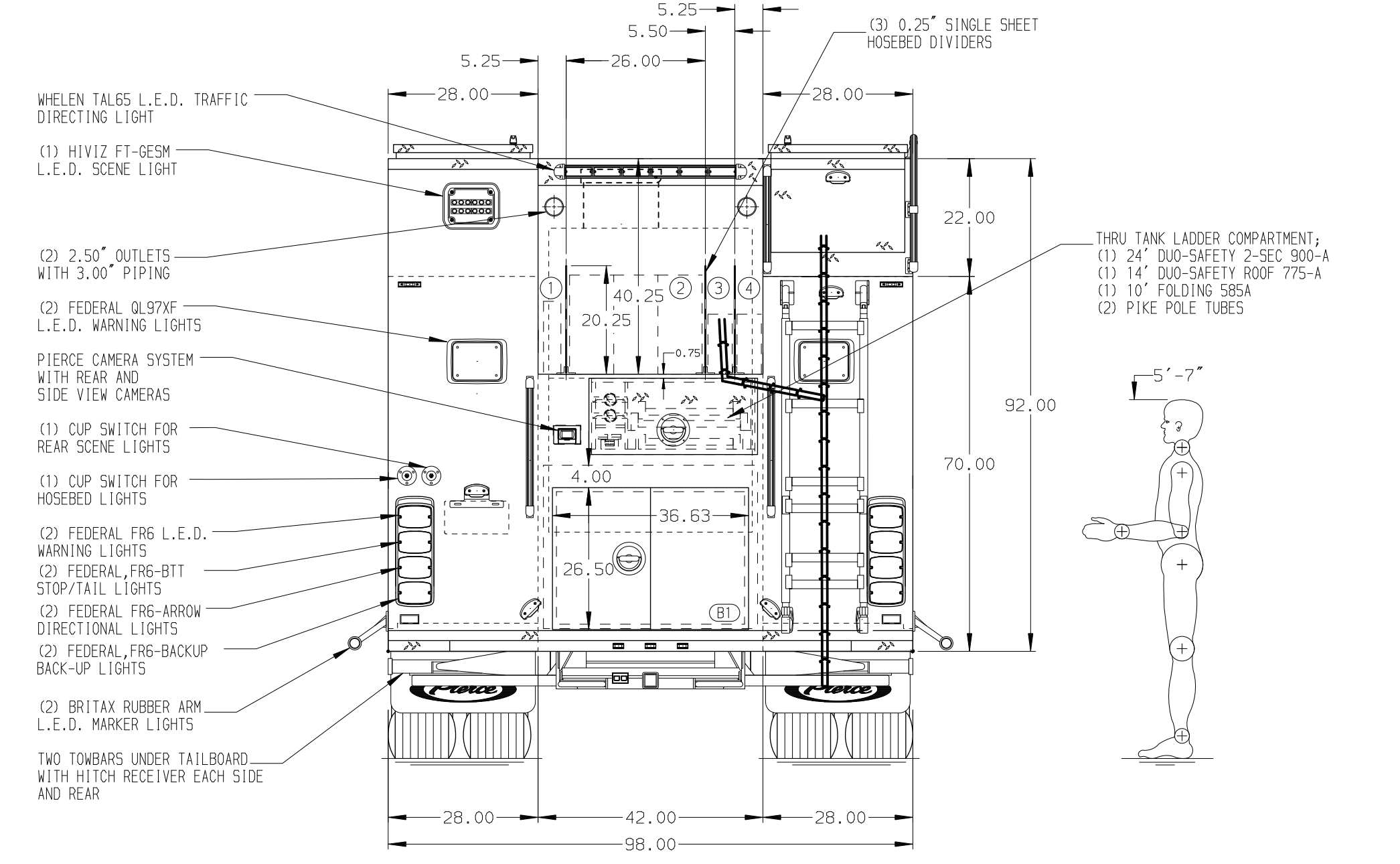
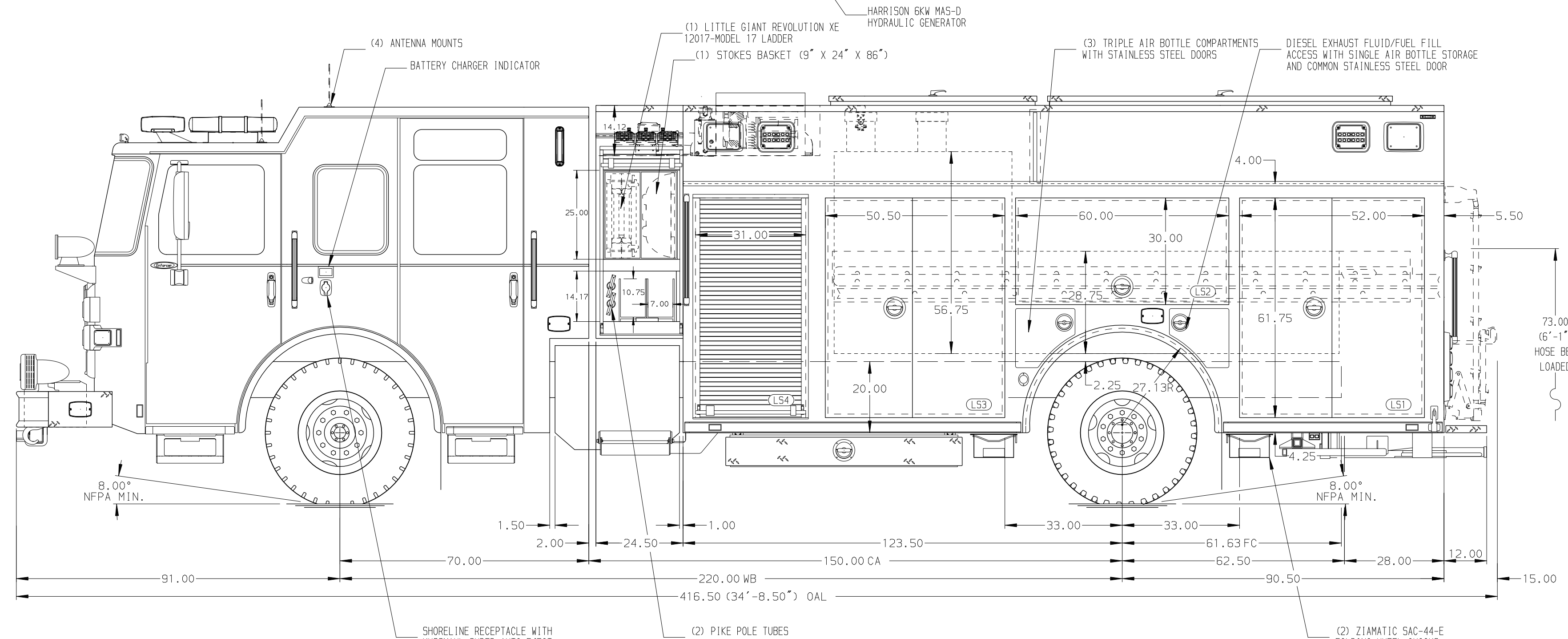


- HOSEBED CAPACITIES**
- ① 300' OF 1.75" MERCEDES AQUAFLOW HOSE
 - ② 1000' OF 5.00" MERCEDES MEGAFLOW HOSE
 - ③ 250' OF 2.50" MERCEDES AQUAFLOW HOSE
 - ④ 250' OF 2.50" MERCEDES AQUAFLOW HOSE



ALUMINUM BODY

NOTE
DIMENSIONS SHOWN ARE APPROXIMATE AND ARE SUBJECT TO MINOR DEVIATIONS AS MAY OCCUR OR BE NECESSARY IN CONSTRUCTION. MINOR DETAILS NOT SHOWN.

- 1. ONSPOT AUTOMATIC TIRE CHAINS TO BE PROVIDED AT REAR
- 2. PAC TRAC IN CAB PER SHOP ORDER
- 3. KUSSMAUL BATTERY CHARGER BEHIND DRIVER SIDE SEAT
- 4. DUAL L.E.D. LIGHT STRIPS LOCATED IN HOSE BED
- 5. CIRCUIT BREAKER PANEL IN COMPARTMENT PER SHOP ORDER
- 6. ONE HANNAY ELECTRIC REWIND CORD REEL MODEL 1618-17-18 LOCATED IN RH2
- 7. 120V DUPLEX RECEPTACLE LOCATED PER SHOP ORDER
- 8. AIR INLET WITH DISCONNECT COUPLING LOCATED IN DRIVER SIDE STEP WELL
- 9. 250# OIL DRY HOPPER LOCATED IN RS1
- 10. HALE SMARTFOAM 3.3 FOAM SYSTEM

CUSTOMER APPROVAL				Pierce MANUFACTURING INC.	JOB NO.	37315
APPROVED BY:					SCALE	1:24
DATE:				TITLE	1500-D-530P, 500G WATER, 30G FOAM, 214" PUC RESCUE LADDERS THRU TANK, (2) CROSSLAYS, GENERATOR	
			CHASSIS DATA	FOR	TOWNSHIP OF MIDDLETOWN MEDIA, PENNSYLVANIA	
			MAKE	DWG NO.	37315AD-SH1	
			PIERCE		CHECKED BY	CDU
			MODEL		SHEET SIZE	SHEET NO.
REV	DATE	BY	CH	ENFORCER	D	1 OF 2