

**INTRODUCING ...  
SHOP 84**

# **GLICK** at a **GLANCE**

Winter 2022  
VOL. 29/ISSUE 4

**WE'RE HIRING!**  
Visit [GlickFire.com/careers](http://GlickFire.com/careers) for details

**Merry  
Christmas  
and  
Happy New Year!**



**INSIDE:**

New Sales • Recent Deliveries • Employee News • GREASE GRITS Department Spotlight • 2023 Events



**Letter from the President**

*When it snows, you have two choices: shovel or make snow angels.*

As we quickly approach the end of another year, we reflect on the growth of **GLICK** and our partners.

Here's a look back at our busy and productive 2022:

- We had a record number of apparatus sales and a steady number of ambulances on order.
- The Lancaster County body shop celebrated one year of operation in their expanded facility.
- The Graphics and Upfit division of **GLICK** opened, based in Lancaster County.
- FIRE EXPO was back in full swing after a two-year hiatus, as were other regional and national shows.
- **Pierce** and **Demers** both introduced all-electric vehicles.
- **GLICK** sponsored over 200 Fire Department and EMS events, as well as multiple racing teams.
- 24 new employees were added to the **GLICK** team so far this year.

As I mentioned in the Winter 2021 newsletter, our Mill Creek Road office was beginning a much-overdue expansion. It was a longer and more extensive project than expected because of delays, but in the end, it has given us much needed space both inside and with our parking lot. See the completed new building front below.

We have also seen the need for additional service



support in southwestern PA. Please see page 7 for additional info on our newly acquired service facility in Eighty Four in Washington County.

As we hear and see everywhere, the job market is continually changing, and we have open positions throughout the state. If you are interested in joining the **GLICK** family, please check out the Careers section of our website at [www.glickfire.com/careers](http://www.glickfire.com/careers) and be sure to apply for any that interest you.

The end of 2022 marks the end of my 34-year career with **GLICK Fire Equipment**. There have been so many changes throughout those years, but your dedication to your community has remained the same. We will continue to be here to support you, as the family-owned and operated business that you have come to know and trust, with Amy Sweitzer taking over as President. Thank you for your business, your friendship, and your continued support to us!

If there is anything we can do to improve our service to you, I encourage you to reach out to us. We look forward to our 35th year in business in 2023, and continually strive to deliver the service you have come to expect from us.

Doug Glick  
President



Newly expanded Bird In Hand office



/GlickFireEquipment



/glickfire

**GET SOCIAL WITH US!**



@glickfire



/glickfire

**NEW SALES**

COMPANY	COUNTY	APPARATUS TYPE	ACCOUNT MGR.
ALLIANCE FIRE AND RESCUE SERVICES	York	Pierce Enforcer Pumper	Cyle Sheaffer
ALPHA FIRE COMPANY	Centre	Pierce Enforcer Pumper	Randy Uhrich
AMERICAN HOSE COMPANY #2	Schuylkill	Vengeant Ford F-550 Blizzard	Randy Uhrich
BALLY COMMUNITY AMBULANCE ASSOC.	Berks	Braun Express Plus Type I Ambulance	Nick DeWitt
CAMBRIA ALLIANCE EMS	Cambria	Demers Sprinter Type II Ambulance	Pete Frejkowski
CITY OF BETHLEHEM EMS	Northampton	Crestline CCL150 Type III Ambulance	Nick DeWitt
CUMRU TWP FIRE STATION 42	Berks	Pierce Enforcer Pumper	Jake Bachman
CUMRU TWP FIRE STATION 42	Berks	Pierce Freightliner Tanker	Jake Bachman
EAST NORRITON TOWNSHIP	Montgomery	Pierce Enforcer Pumper	Matt Wiedenhaefer
FALLS TWP FIRE COMPANY NO 1	Bucks	Pierce Enforcer 129" Pumper	Matt Wiedenhaefer
FALLS TWP FIRE COMPANY NO 1	Bucks	Pierce Enforcer 152" Pumper	Matt Wiedenhaefer
FALLS TWP FIRE COMPANY NO 1	Bucks	Pierce Enforcer Ascendant 107' Aerial	Matt Wiedenhaefer
FINLEYVILLE VOLUNTEER FIRE DEPT.	Washington	BRAT Mini Pumper	Scott Schill
FIRE DEPARTMENT OF NORTH VERSAILLES	Allegheny	First Priority Remount Type III Ambulance	Pete Frejkowski
FRIEDENS VOLUNTEER FIRE DEPT.	Somerset	Pierce Saber Pumper <b>GLICK DEMO UNIT!</b>	Scott Schill
KUTZTOWN COMMUNITY FIRE COMPANY	Lebanon	Vengeant Ford F-550 Blizzard	Randy Uhrich
LANCASTER TWP FIRE DEPT.	Lancaster	Pierce Enforcer Pumper	Jake Bachman
LOWER SWATARA FIRE DEPT.	Dauphin	Pierce Enforcer Pumper	Cyle Sheaffer
MONTGOMERY TOWNSHIP FIRE DEPT.	Montgomery	Pierce Enforcer Pumper	Matt Wiedenhaefer
MONTGOMERY TOWNSHIP FIRE DEPT.	Montgomery	Pierce Enforcer Heavy-Duty Rescue Pumper	Matt Wiedenhaefer
MOSHANNON VALLEY EMS	Centre	Demers Sprinter Type II Ambulance	Kevin Kopco
NAZARETH AMBULANCE CORPS	Northampton	First Priority Remount Type I Ambulance	Nick DeWitt
PENN MEDICINE - LANCASTER GENERAL HEALTH	Lancaster	Tahoe Response Vehicle with Upfit	Nick DeWitt
PERKIOMEN TWP FIRE COMPANY	Montgomery	Pierce Enforcer Pumper	Matt Wiedenhaefer
SOMERSET AREA AMBULANCE ASSOC.	Somerset	Crestline CCL150 Type I Ambulance	Pete Frejkowski
SOMERSET AREA AMBULANCE ASSOC.	Somerset	Crestline CCL150 Type III Ambulance	Pete Frejkowski
SOUTH STRABANE FIRE DEPT.	Washington	Pierce Enforcer Ascendant 107' Aerial	Scott Schill
UNION FIRE COMPANY NO. 1 OF LEESPORT	Berks	Pierce Enforcer Pumper	Jake Bachman
UPPER MACUNGIE TWP	Lehigh	Pierce Enforcer Pumper	Bud Strauss
UPPER MACUNGIE TWP	Lehigh	Pierce Arrow XT Ascendant 100' Mid-mount Aerial	Bud Strauss
WASHINGTON TWP VOLUNTEER FIRE COMPANY	Westmoreland	Pierce Enforcer PUC Rescue Pumper	Scott Schill
WESTWOOD FIRE COMPANY	Chester	Braun Ford F-550 Chief XL Type I Ambulances <b>2 UNITS!</b>	Nick DeWitt
WESTWOOD FIRE COMPANY	Chester	Braun Remount Type III Ambulance	Nick DeWitt
WHITE MILLS FIRE DEPT.	Wayne	Vengeant Dodge 550 Blizzard	Rob Macchia

VISIT OUR WEBSITE FOR A LOOK AT OUR APPARATUS ON ORDER! [www.glickfire.com/on-order](http://www.glickfire.com/on-order)



# DEPARTMENT SPOTLIGHT

## PARTS DEPARTMENT



**LANCASTER COUNTY**  
717-299-4120



In today's market, supply and demand for parts has been a challenge for both the suppliers and those in need. We have been watching the trends of certain items as well, and have made an effort to stock those items that may be harder to come by in the upcoming months in order to meet the urgent demands of the emergency service industry.

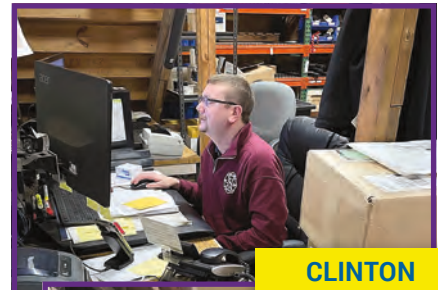
We maintain a stock of over 3-million dollars' worth of emergency repair parts in our four facilities. We carry more than 50 manufacturer's parts as well as being an Authorized Dealer for:

- Pierce
- Demers, Braun and Crestline
- FRC
- Hale/Akron/Weldon
- PAC
- Waterous
- Whelen
- Zico
- and more!

If you don't know exactly what you need, our knowledgeable staff is available to help you figure it out. **GLICK** has four conveniently located facilities across Pennsylvania with 12 full-time parts department employees ready to assist you. Parts can be picked up at any of our locations, or if you need your part shipped, most can be shipped overnight from our dedicated shipping departments.



**MONTGOMERY COUNTY**  
267-638-6380



**CLINTON COUNTY**  
570-858-0500



**BUTLER COUNTY**  
724-452-5553





*Welcome to our New Employees!*

**NORM ARTHUR**

**Service Tech • Shop 84**

Norm has been a volunteer firefighter for Amwell Twp for 20 years, and as Chief for the last five years. He and his wife recently celebrated 16 years of marriage and have three children. He enjoys spending time watching his daughter play soccer and coaching his boys on the baseball field.



**DAVE MOHN**

**Graphics / Upfit Department Manager**

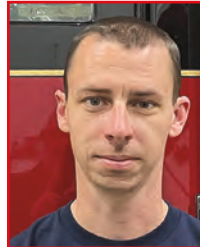
Dave recently retired from NHRA where he was the Division Director for the northeast division. He is a fan of all Philly sports teams, enjoys car shows, and spending time at the beach with his wife and two children. [dave.mohn@glickfire.com](mailto:dave.mohn@glickfire.com)



**CARL DILLON**

**Service Tech • Zelienople**

Carl lives in North Sewickley Twp where he has been a volunteer firefighter for North Sewickley Fire Department for over 12 years. He is currently a lieutenant. In the summer, Carl enjoys racing motocross with his ATV.



**RUSTY SCHREINER**

**Account Manager • Central PA**

Rusty joins us with a vast knowledge of Pierce fire apparatus from the customer side, having been a firefighter for over 30 years. In his spare time, he enjoys traveling, spending time with his family, and attending his daughter's field hockey and lacrosse games. [rusty.schreiner@glickfire.com](mailto:rusty.schreiner@glickfire.com)



**ADAM KEISTER**

**Mobile PM Technician • Hatfield**

Adam lives in Yardley and enjoys boating down Long Beach Island in the summer and snowboarding in the winter. He has been a member of Yardley-Makefield Fire Company for more than 20 years and currently holds the position of Captain. [adam.keister@glickfire.com](mailto:adam.keister@glickfire.com)



**TARA ZIMMERMAN**

**VP of Business Development**

Tara lives in New Holland with her husband and four children. Previously, she was branch manager at a truck parts company for 17 years, and a professional photographer for seven years. She enjoys going to her kids soccer games, being outdoors with family, watching football, photography, and traveling. [tara.zimmerman@glickfire.com](mailto:tara.zimmerman@glickfire.com)



**ANDREA MARTSOLF**

**Parts Department • Zelienople**

Andrea was born and raised in Western PA and recently purchased a 23-acre farm outside of Ellwood City with her husband. She previously worked for Ford for more than 15 years, and is currently restoring a 1951 F-1. She enjoys hunting pheasants with her three German Shorthair Pointers, fishing, camping, and riding her Harley and side-by-side. [andrea.martsolf@glickfire.com](mailto:andrea.martsolf@glickfire.com)



**WE'RE HIRING!**

*Would you like to be part of the GLICK team?  
Visit [www.GlickFire.com/careers](http://www.GlickFire.com/careers) to view  
open positions and apply today!*

*Congratulations! Employee Years of Service ...*



**Mike Wilson**  
*Service Technician, Bird In Hand*



**Sarah Grimm**  
*Human Resources, Bird In Hand*



**Jerry McMahon**  
*Body Shop Lead, Zelienople*



**Matt Wiedenhaefer**  
*Account Mgr., Southeast PA*

**BRENTWOOD VOLUNTEER FIRE COMPANY, Allegheny County, Job #37016** ***PURCHASED AS A GLICK STOCK UNIT***

**Pierce Enforcer Heavy-Duty Rescue Pumper;** Paccar MX13 510 hp engine; Waterous CXC20 1,500 GPM pump; 750-gallon tank; Husky 3 foam system; 20-gallon foam cell; New York style hose bed; 19-inch extended bumper; 3.00" deluge outlet; 11.00" speedlay module; (2) 1.50" speedlays; ***CUSTOM FABRICATION BY GLICK***

**BRISTOL TWP FIRE MARSHALLS OFFICE, Bucks County, Job #36828**

**Pierce Enforcer Pumper;** Cummins L9 450 hp engine; Hale Qmax-150 1,500 GPM pump; 750-gallon tank; Husky 12 foam system; 30-gallon Class B foam cell; 22-inch extended bumper; Deluge outlet with TFT Extend-a-Gun; Side Roll and Frontal Impact Protection; TAK-4 Independent Front Suspension; ***CUSTOM FABRICATION BY GLICK***

**CHALFONT CHEMICAL FIRE COMPANY, Bucks County, Job #37814**

**Pierce Enforcer PUC Pumper;** Cummins L9 450 hp engine; Pierce 1,500 GPM PUC pump; 1,000-gallon tank; Harrison 6kW generator; 22-inch extended bumper with (2) hose trays; TAK-4 Independent Front Suspension; TFT Extend-a-Gun XG18; Booster reel

**CUMRU TWP. FIRE DEPT., Berks County, Job #36811**

**Pierce Enforcer Pumper;** Cummins L9 450 hp engine; Waterous CSU 2,000 GPM pump; 1,000-gallon tank; New York style hose bed; 3.00" deluge outlet with TFT Extend-a-Gun XG18; 22-inch extended bumper; Side Roll and Frontal Impact Protection; TAK-4 Independent Front Suspension; ***CUSTOM FABRICATION BY GLICK***

**EARL TWP VOLUNTEER FIRE CO NO. 1, Berks County, Job #36845**

**Pierce Enforcer Pumper Tanker;** Cummins X12 500 hp engine; Waterous CXK 1,250 GPM pump; 3,000-gallon tank; Side Roll and Frontal Impact Protection; TAK-4 Independent Front Suspension; 10.00" dump valve with telescopic chute, each side; 10.00" rear Newton dump valve; Zico Quic-Lift hydraulic ladder rack; ***CUSTOM FABRICATION BY GLICK***

**EDGE HILL FIRE COMPANY NO. 1, Montgomery County, Job #36813**

**Pierce Enforcer Ascendant 107' Heavy-Duty Ladder;** Detroit DD13 525 hp engine; Pierce 1,500 GPM pump; 500-gallon tank; Harrison 6kW generator; 16-inch extended bumper; Frontal Impact Protection; TAK-4 Independent Front Suspension; High Flow 1,500 GPM waterway; ***CUSTOM FABRICATION BY GLICK***

**FORD CITY HOSE COMPANY NO. 1 AMBULANCE SERVICE, Armstrong County, Job #F23C-20404**

**Crestline CCL150 Type III Ambulance** on a Ford E-350 chassis; Stryker Power-LOAD; O<sub>2</sub> to Go Oxygen load system; (7) LED emergency lights on front; All Whelen LED emergency lighting; Rumbler siren; Rear camera

**FRACKVILLE COMMUNITY AMBULANCE, Schuylkill County, Job #F23C-20407**

**Crestline CCL150 Type III Ambulance** on a Ford E-350 chassis; Stryker Performance-LOAD and stretcher; CPR seating; O<sub>2</sub> to Go Oxygen load system; (7) LED emergency lights on front; Rear camera; ***CUSTOM GRAPHICS BY GLICK***

**LEECHBURG VOLUNTEER FIRE COMPANY, Armstrong County, Job #36848**

**Pierce Freightliner Pumper;** Cummins L9 360 hp engine; Hale Qmax-XS-175 1,750 GPM pump; 1,000-gallon tank; New York style hose bed; 3.00" deluge outlet with TFT Extend-a-Gun XG18; 4-door high-roof crew cab; ***CUSTOM FABRICATION BY GLICK***

**LEHMAN TOWNSHIP, Pike County, Job #08859**

**Braun Express Plus Type I Ambulance** on a Ford F-450 chassis; Stryker Power-LOAD and Power stretcher; EZ-O<sub>2</sub> Lift; Rosco Dual Vision XC4 dash camera; Patient monitoring camera; Zico QR-D-2 oxygen mounts; Traffic emitter; Air horns; Liquid Spring Suspension

**LONGWOOD FIRE COMPANY, Chester County, Job #08860**

**Braun Express Type I Ambulance** on a Ford F-450 chassis; Stryker Power-LOAD and cot; EZ-O<sub>2</sub> lift; Traffic emitter; Air horns; Technimount system; Liquid Spring Suspension

**MEDIC RESCUE, Beaver County, Job #F23C-20258/65**

**Crestline CCL150 Type III Ambulance** on a Ford E-350 chassis; CPR seating; (7) LED emergency lights on front; All Whelen LED emergency lighting; Rear camera; O<sub>2</sub> to Go Oxygen load system; ***CUSTOM GRAPHICS BY GLICK***

**MILTON FIRE DEPT./BOROUGH OF MILTON, Northumberland County, Job #36824**

**Pierce Enforcer Pumper;** Cummins L9 450 hp engine; Hale Qmax-200 2,000 GPM pump; 750-gallon tank; Akron Eductor foam system; 20-gallon foam cell; New York style hose bed; 3.00" deluge outlet with TFT Extend-a-Gun XG18; 22-inch extended bumper; Side Roll and Frontal Impact Protection; ***CUSTOM FABRICATION BY GLICK***





## NEW SERVICE LOCATION in Southwestern Pennsylvania!



We are excited to announce our new service location in southwestern Pennsylvania, in the town of Eighty Four in Washington County.

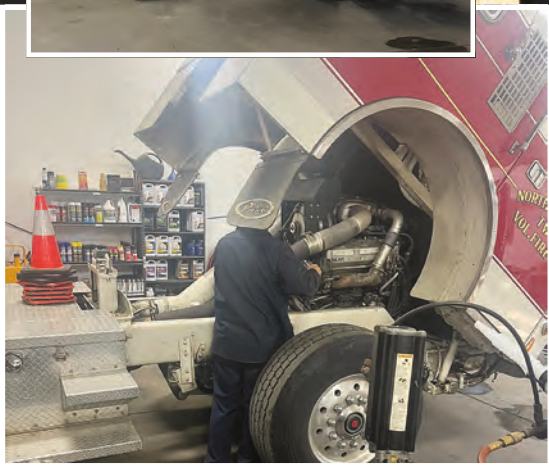
To ensure you are provided with the best service possible, we have two full-time technicians with more than a combined 40 years of experience.

As with all our facilities, we will provide services to all makes and models of emergency apparatus.

Among other services, this new location will focus on:

- Light service and repairs
- Preventive Maintenance
- Pump tests
- State inspection

Customers can schedule work through our service office in Zelienople at 724-452-5553, or [servicewest@glickfire.com](mailto:servicewest@glickfire.com).



**Now with five service facilities, 16 road service trucks, and two paint and body shop facilities, Glick is your premier sales and service choice in Pennsylvania!**

### **NORTHERN BERKS EMS, Berks County, Job #F23C-20399**

**Crestline CCL150 Type III Ambulance** on a Ford E-350 chassis; Stryker Performance-LOAD; Traffic emitter; O<sub>2</sub> to Go Oxygen load system; (7) LED emergency lights on front; Rumbler siren; Rear camera; **CUSTOM GRAPHICS BY GLICK**

### **POTTSVILLE AREA EMS, Berks County, Job #M22-3963**

**Demers Sprinter Type II Ambulance** on a Mercedes Sprinter EXE Van 2500 chassis; Stryker Performance-LOAD; Traffic emitter; backup camera; Whelen emergency lighting; LED dome lighting

### **RAINBOW VOLUNTEER FIRE COMPANY, Allegheny County, Job #36470**

**Pierce Enforcer 55' Sky-Boom Water Tower**; Cummins L9 450 hp engine; Waterous CSU 2,000 GPM pump; 500-gallon tank; 19-inch extended bumper with center hose tray; 2.50" outlet on left front bumper; Akron 3350 monitor; Side Roll and Frontal Impact Protection; **CUSTOM FABRICATION BY GLICK**

### **SAYRE BOROUGH FIRE DEPT., Bradford County, Job #36863**

**Pierce Velocity 100' Rear-mount Platform**; Cummins X12 500 hp engine; Waterous CSU 1,500 GPM pump; 450-gallon tank; Lowered crosslays with side outlets; Lowered Overall Height; 19-inch extended bumper with center hose tray; TAK-4 Independent Front Suspension; MUX Flowmeter waterway; **CUSTOM FABRICATION BY GLICK**



VISIT OUR WEBSITE FOR ADDITIONAL DETAILS ON NEW DELIVERIES! [www.glickfire.com/deliveries](http://www.glickfire.com/deliveries)



www.glickfire.com



LANCASTER COUNTY  
350 Mill Creek Road  
Bird In Hand, PA 17505  
(717) 299-4120

MONTGOMERY COUNTY  
1851 North Penn Road  
Hatfield, PA 19440  
(267) 638-6380

CLINTON COUNTY  
7484 Nittany Valley Drive  
Mill Hall, PA 17751  
(570) 858-0500

BUTLER COUNTY  
2348 Evans City Road  
Zelienople, PA 16063  
(724) 452-5553

If you no longer wish to receive our newsletter, or are receiving duplicates, please email [marketing@glickfire.com](mailto:marketing@glickfire.com), or call 717.299.4120.

# MARK THESE EVENTS ON YOUR 2023 CALENDAR\*

*\*subject to change*

## Monroeville Fire & EMS Show

March 4–5

Monroeville Convention Center  
Monroeville, PA

## EMS Update

March 23–25

Seven Springs Mountain Resort  
Seven Springs, PA

## EMMCO West Symposium

March 30 – April 1

Ambassador Conference Center  
Erie, PA

## FDIC

April 24–29

Indiana Convention Center  
Indianapolis, IN

## Fire Expo 2023

May 19–20

PA Farm Show & Expo Center  
Harrisburg, PA

## Fire-Rescue International

August 16–18

Kansas City, MO

## Firehouse EXPO

Sept. 25–29

Greater Columbus Convention Ctr.  
Columbus, OH

Get the latest "News and Events" at [www.GlickFire.com/news](http://www.GlickFire.com/news)